

SKYLIFT MODEL SK260

SPECIFICATIONS

BUCKET

Rated load capacity	200 kg
Max ground to bucket floor height	26.0 m
Inside dimension	1.2 x 0.7 x 0.9 m
Max working radius	14.9 m
Swing angle	45° right 45° left

BOOM

Type	Four stage
------	------------

ELEVATION

Rotation angle	360° continuous
----------------	-----------------

OUTRIGGER

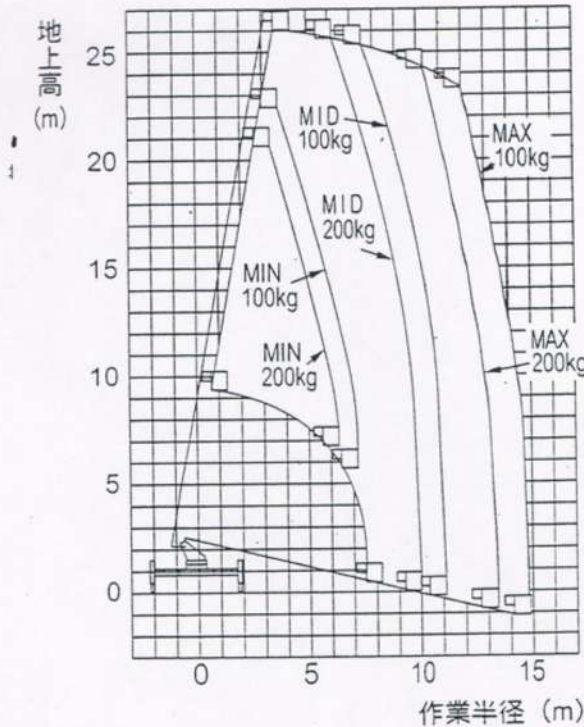
Extendable width	1.99 ~ 4.25 m
------------------	---------------

VEHICLE

Length	8325 mm
Height	3450 mm
Width	2180 mm
Weight	7900 kg

WORKING RANGE DIAGRAM

26.0m
SK260



アウトリガ張出幅 (mm)
MAX : 4200 ~ 4240
MID : 3115 ~ 4200
MIN : 1990 ~ 3115

