



Safe



Efficient



Intelligent

SANY



品质改变世界
QUALITY CHANGES THE WORLD

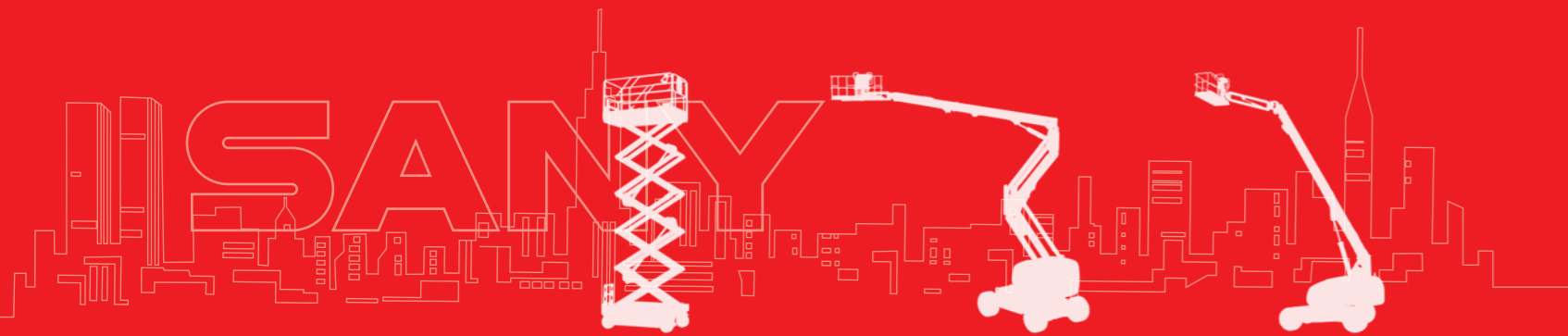
MOBILE ELEVATING WORK PLATFORM

SANY AERIAL WORK EQUIPMENT Co., Ltd

Address: No. 18-688, Industrial Road, Gaoxin District, Wuxing District, Huzhou, Zhejiang Province
Postal code: 313002 Hotline: 400-8878-318 Website: www.sanyglobal.com

Copyright version on 2024 January

This manual was produced in January 2024. If there are any updates to the product parameters and configurations, no separate notice will be given. The images in this manual are for illustrative purposes only.
The right to interpret within the scope permitted by law belongs to our company.
Reproduction and citation are not allowed without permission.



Quality Changes the World

QUALITY CHANGES THE WORLD

Established in October 2020, Sany Aerial Work Equipment is part of the Sany Group. This division is dedicated to the research, development, manufacturing, sales, and service of aerial work platform products. Sany Aerial Work Equipment is strategically positioned within the Sany Group as one of two new business that represent Sany Group's continued expansion the construction equipment market.

Since its establishment, Sany Aerial Work Equipment has aligned itself with the group's vision and commitment to delivering high-quality aerial work products while offering comprehensive customer service. A strong emphasis is placed on cultivating high-quality talent within the industry and providing customers with comprehensive aerial work platform solutions, generating greater value for customers with both products and service.

SANY

Aerial Work Platform MOBILE ELEVATING WORK PLATFORMS



Compliant with CE standards

SANY

MOBILE ELEVATING WORK PLATFORM



www.sanyglobal.com

TELESCOPIC BOOM LIFT

SPT22/SPT26



Safe



Efficient



Intelligent

Compliant with CE standards

- Intelligent digital equipment management system with visual human-machine interaction system for improved efficiency and intelligence
- Precise control of boom lift and extension that minimizes platform oscillation, and turning is optimized for smoother traveling
- Fully proportional valve group and controls for more precise movements
- Efficient proprietary boom descent technology with zero energy consumption
- IP67 rated electrical parts, for exceptional durability
- 90+% common parts with the Sany boom product family, for easier maintenance and parts availability
- 360° continuous rotation for ease of operation



Elevates in tight spaces



Tight turning radius



High stability coefficient



Long component life



Three capacity zones



Low TCO



Large capacity



Powerful



Exceptional controllability



◆ All products of the Sany aerial work platform series comply with CE standards

This printed matter is not part of the contract and does not constitute a component of the vehicle purchase contract. Due to continuous product improvement, we reserve the right to change product models, specifications, and configurations without prior notice. The pictures are for reference only, and the actual product shall prevail. The products in the pictures may have non-standard configurations, and some components may need to be purchased separately. (Within the scopes permitted by law, Sany has the final interpretation right)
Copyright version on 2024 January

TELESCOPIC BOOM LIFT

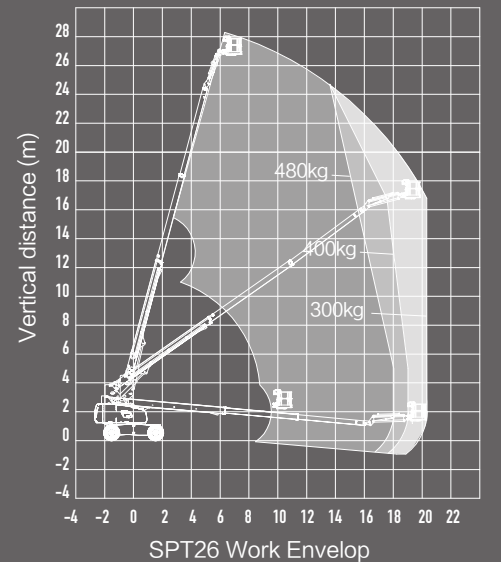
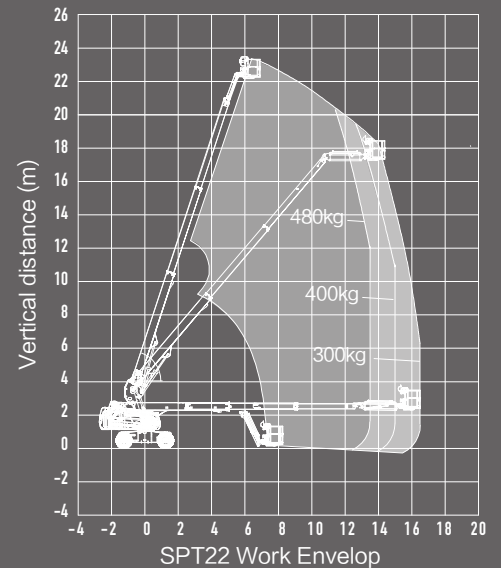
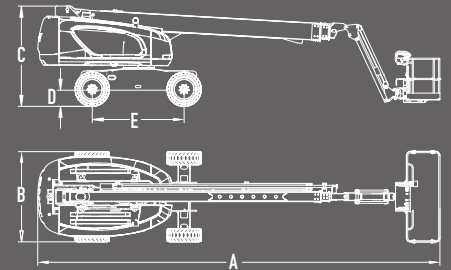
SPT22/SPT26

Compliant with CE standards



QUALITY CHANGES THE WORLD

Model	SPT22(SPT73)		SPT26(SPT88)	
	Metric	Imperial	Metric	Imperial
Dimensions				
Platform height max.	22.4m	73ft6in	26.7m	87ft7in
Working height max.	24.4m	80ft1in	28.7m	94ft2in
Horizontal outreach max.	16.5m	54ft2in	20.3m	66ft7in
A-Length (stowed)	11.0m	36ft1in	12.3m	40ft4in
B-Width (stowed)	2.45m	8ft	2.49m	8ft2in
C-Height (stowed)	2.70m	8ft10in	3.05m	10ft
Platform dimension(L × W)	2.44m × 0.91m	8ft × 3ft	2.44m × 0.91m	8ft × 3ft
D-Ground clearance	0.31m	1ft	0.41m	1ft4in
E-Wheelbase	2.50m	8ft2in	3.05m	10ft
Lift capacity (Unrestricted /Restricted/Restricted)	300kg/400kg /480kg	662lb/882lb /1058lb	300kg/400kg /480kg	662lb/882lb /1058lb
Turntable tail swing	1.50m	4ft11in	1.50m	4ft11in
Jib rotation	+70° /-65°		+70° /-65°	
Turntable rotation	360° Continuous		360° Continuous	
Platform rotation	180°		180°	
Performance				
Platform occupancy max. (Unrestricted/Restricted /Restricted)	2 Persons and tools 2 Persons and tools 3 Persons and tools		2 Persons and tools 2 Persons and tools 3 Persons and tools	
Tilt sensor activation	X-5° /Y-5°		X-5° /Y-5°	
Turning radius max. (inside/outside)	2.40m/5.50m	7ft10in/18ft1in	3.66m/6.86m	12ft/22ft6in
Gradeability	45%		45%	
Drive speed-stowed	0-5.5km/h	0-3.4mph	0-6.0km/h	0-3.7mph
Drive speed-raised	0-1.1km/h	0-0.7mph	0-0.8km/h	0-0.5mph
Power				
Drive × Steer	4WD × 2WS		4WD × 2WS	
Fuel tank capacity	160L	35.2gal(UK) 42.2gal(US)	160L	35.2gal(UK) 42.2gal(US)
Engine	36.4kW/2600rpm/ D2.9/DEUTZ/China Stage IV 36.5kW/2000rpm/ V2607-DI-TE3B/ KUBOTA/China Stage IV		55.4kW/2600rpm/ TD2.9/DEUTZ/China Stage IV 55.4kW/2600rpm/ V3307-TE5AB/ KUBOTA/China Stage IV	
Others				
Weight	12700kg	28000lb	15700kg	34612lb



SANY AERIAL WORK EQUIPMENT Co., Ltd

Address: No. 18-688, Industrial Road, Gaoxin District, Wuxing District, Huzhou, Zhejiang Province

Postal code: 313002

Hotline: 400-8878-318

Website: www.sanyglobal.com

Copyright version on 2024 January