

HIFOUNE



HIFOUNE

XIAMEN HIFOUNE MACHINERY CO.,LTD.

ADDRESS: Torch High-Tech Zone (Xiang'an) Industrial Park,Xiamen

TEL:+86 0592 7820328

Email: kevin@hifoune.com

www.hifouneforklift.com



LITHIUM BATTERY FBL 20/25/30/35
COUNTER BALANCED FORKLIFT



- 

fast charging
- 

charge and use
- 

Powerful
- 

EP
- 

maintenance free
- 

safe
- 

zero emission
- 

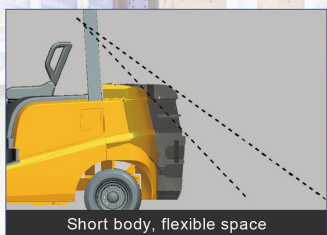
adapt to extreme temp



Extra-wide mast with wide field of view



Excellent ergonomics technology



Short body, flexible space



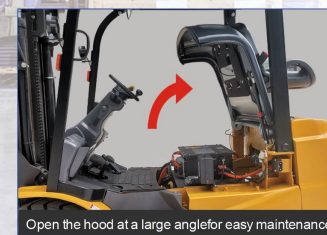
Fast charging port, charge and use at any time



Large-screen interactive display instrument




Large capacity lithium battery



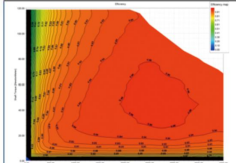
Open the hood at a large angle for easy maintenance

Intelligent wake-up system




- *System self-inspection to ensure that all parts meet the working conditions before starting the forklift
- *Completely cut off the lithium battery power supply to avoid lithium battery power loss due to long-term storage

Adopt permanent magnet motor



- *Reduce copper consumption, reduce motor electromagnetic noise, improve heat dissipation performance.
- *High space utilization rate, and increase overall efficiency by 20%

Intelligent lithium battery charger



Status: Charging
 Switch: On
 SOC: 39 %
 Voltage: 120.4 V Current: 50.0 A
 Time: 0.0 h Error: α

LITHIUM BATTERY COUNTER BALANCED FORKLIFT (Air cooling)

Electric forklift parameters table							
Content	No.	Projects	Unit				
Character	1	Brand	—	Hifoune	Hifoune	Hifoune	Hifoune
	2	Model	—	FBL20	FBL25	FBL30	FBL35
	3	Power mode	—	Lithium Iron Phosphate battery			
	4	Driving mode		Seat	Seat	Seat	Seat
	5	Load capacity	Q(Kg)	2000	2500	3000	3500
	6	Load center	C(mm)	500	500	500	500
	7	Max.lifting height	h4 (mm)	3000	3000	3000	3000
Weight	8	Self-weight	kg	3650	3810	4110	4410
	9	Battery weight	kg	154	154	180	180
Size	10	Front overhang	x (mm)	470	470	475	475
	11	Wheelbase	y (mm)	1550	1550	1650	1650
	12	Mast tilting angle (fwd/bwd)	α/β (°)	6/12	6/12	6/12	6/12
	13	Mast height(fork lowered)	mm	2080	2080	2140	2140
	14	Free lifting height	mm	140	140	145	145
	15	Max.lifting height	mm	4040	4040	4135	4135
	16	Overhead guard height	mm	2125	2125	2150	2150
	17	Driver's seat height	mm	1075	1075	1110	1110
	18	Overall length(without fork)	h1 (mm)	2420	2450	2540	2585
	19	Overall width	b1 (mm)	1160	1160	1220	1220
	20	Fork size:thickness*width*length	mm	1220X122X40	1220X122X40	1220X125X45	1220X125X50
	21	Min. ground clearance (mast)	m1 (mm)	130	130	140	140
	22	Min. ground clearance (middle of chassis)	mm	140	140	150	150
	23	Min. turning radius	Wa (mm)	2250	2250	2350	2395
Tires	24	Tire type	-	Pneumatic tire	Pneumatic tire	Pneumatic tire	Pneumatic tire/Solid tire
	25	Tire number (X=driving tire)	-	2x/2	2x/2	2x/2	2x/2
	26	Front tire	-	7.00-12-12PR	7.00-12-12PR	28X9-15-14PR	28X9-15-14PR
	27	Rear tire	-	18X7-8-14PR	18X7-8-14PR	18X7-8-14PR	18X7-8
Performance	28	Travelling speed (loaded/unloaded)	Km/h	16/16	16/16	15/15	15/15
	29	Lifting speed (loaded/unloaded)	mm/s	300/440	300/440	320/460	310/460
	30	Max.drawbar pull(load/unloaded)	kN	22/21	21.5/20.5	20.5/19.5	19.5/18
	31	Max.gradeability (loaded/unloaded)	%	15/15	15/15	15/15	15/15
System	32	Power unit model	-	35G2	35G2	35G2	35G2
	33	Power unit cooling form	-	Air cooling	Air cooling	Air cooling	Air cooling
	34	Travelling motor power	KW	15.0AC	15.0AC	15.0AC	15.0AC
	35	Working motor power	KW	15.0AC	15.0AC	15.0AC	15.0AC
	36	Battery (voltage/capacity)	V/Ah	115.2/125	115.2/125	115.2/173	115.2/173
	37	Standard charger specifications(output)	V/A	115/50	115/50	115/100	115/100

The standard model data would vary according to the configuration.

MAIN PRODUCTS

It include a full range of counterbalanced internal combustion forklifts, counterbalanced electric forklifts and electric storage forklifts. We pursue to provide customers with high-quality products in the full range of products, and to provide customers with considerate services in all aspects.

LITHIUM BATTERY COUNTER BALANCED FORKLIFT (liquid cooling)

Electric forklift parameters table							
Content	No.	Projects	Unit				
Character	1	Brand	—	Hifoune	Hifoune	Hifoune	Hifoune
	2	Model	—	FBL20S	FBL25S	FBL30S	FBL35S
	3	Power mode	—	Lithium Iron Phosphate battery			
	4	Driving mode		Seat	Seat	Seat	Seat
	5	Load capacity	Q(Kg)	2000	2500	3000	3500
	6	Load center	C(mm)	500	500	500	500
	7	Max.lifting height	h4 (mm)	3000	3000	3000	3000
Weight	8	Self-weight	kg	3850	3810	4110	4800
	9	Battery weight	kg	154	154	180	305
Size	10	Front overhang	x (mm)	470	470	475	490
	11	Wheelbase	y (mm)	1550	1550	1650	1750
	12	Mast tilting angle (fwd/bwd)	α/β (°)	6/12	6/12	6/12	6/12
	13	Mast height(fork lowered)	mm	2080	2080	2140	2180
	14	Free lifting height	mm	140	140	145	150
	15	Max.lifting height	mm	4040	4040	4135	4240
	16	Overhead guard height	mm	2125	2125	2150	2165
	17	Driver's seat height	mm	1075	1075	1110	1125
	18	Overall length(without fork)	h1 (mm)	2420	2450	2540	2665
	19	Overall width	b1 (mm)	1160	1160	1220	1280
	20	Fork size:thickness*width*length	mm	1220X122X40	1220X122X40	1220X125X45	1220X125X50
	21	Min. ground clearance (mast)	m1 (mm)	130	130	140	145
	22	Min. ground clearance (middle of chassis)	mm	140	140	150	150
	23	Min. turning radius	Wa (mm)	2250	2250	2350	2460
Tires	24	Tire type	-	pneumatic tire	pneumatic tire	pneumatic tire	pneumatic tire/Solid tire
	25	Tire number (X=driving tire)	-	2x/2	2x/2	2x/2	2x/2
	26	Front tire	-	7.00-12-12PR	7.00-12-12PR	28X9-15-14PR	28X9-15-14PR
	27	Rear tire	-	18X7-8-14PR	18X7-8-14PR	18X7-8-14PR	18X7-8
Performance	28	Travelling speed (loaded/unloaded)	Km/h	23/23	23/23	22/23	20/20
	29	Lifting speed (loaded/unloaded)	mm/s	450/440	450/440	440/460	400/460
	30	Max.drawbar pull(load/unloaded)	kN	24/25	24/25	25/25	26/26
	31	Max.gradeability (loaded/unloaded)	%	20/20	20/20	20/20	20/20
System	32	Power unit model	-	35S2	35S2	35S2	35S2
	33	Power unit cooling form	-	liquid cooling	liquid cooling	liquid cooling	liquid cooling
	34	Travelling motor power	KW	20.0AC	20.0AC	20.0AC	20.0AC
	35	Working motor power	KW	20.0AC	20.0AC	20.0AC	20.0AC
	36	Battery (voltage/capacity)	V/Ah	153.6/165	153.6/165	153.6/165	153.6/230
	37	Standard charger specifications(output)	V/A	150/100	150/100	150/100	150/100

The standard model data would vary according to the configuration.

