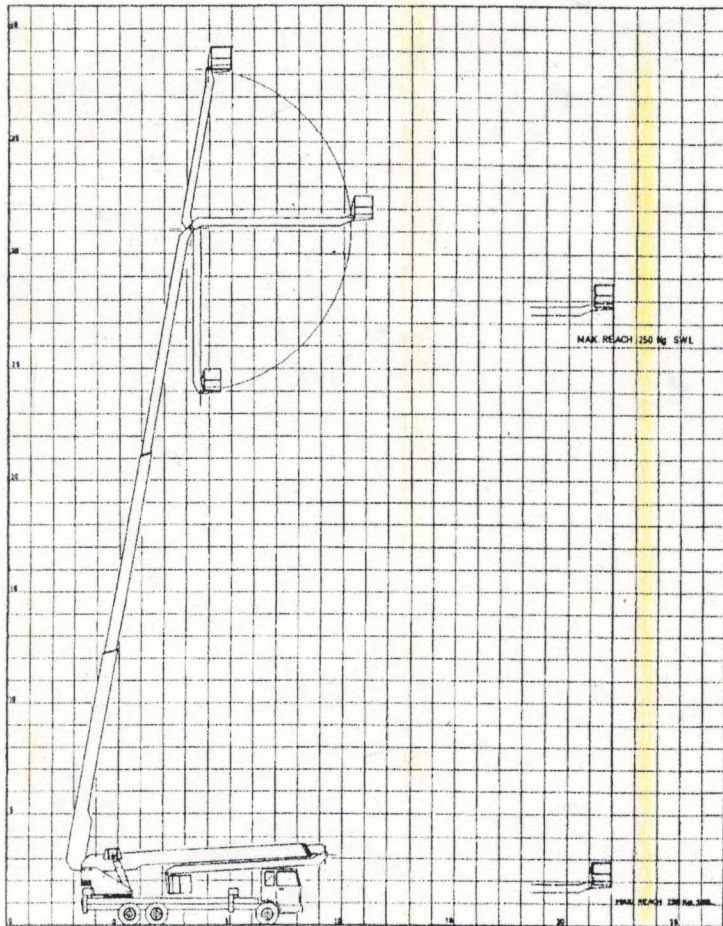


OPERATING RANGE CHART



Controls

Four lever operation at pivot frame with over-riding foot operated dead-man switch.

Basket

Two lever joy stick controls with push button dead-man switch in top of lever.
Emergency stop button for all hydraulic functions on basket control panel.

Stabiliser

8 Bank manual lever valve bank with stabiliser/tower selector switch.

Power Supply (Hydraulic)

P.T.O. Pump with hydraulic speed control.

Options

Lockers, tool lines, engine stop/start, winch attachment.

BRIEF SPECIFICATIONS

Maximum working height	40 metres
Working radius at maximum height	5 metres
Maximum working radius	22 metres
Maximum working radius upper boom	8 metres
Safe working load	250 kg
Fully raise upper boom from ground	90 seconds
Fully lower upper boom from ground	30 seconds
Fully raise lower boom from ground	90 seconds
Fully lower upper boom from maximum height	30 seconds
Fully extend Telescopic booms to maximum height	150 seconds
Fully retract boom from maximum height	120 seconds
Maximum working depth below ground level	4 metres
Stabiliser spread	5.330 metres
Stabiliser ground undercut	200 mm
Travelling length	11 metres
Travelling width	2.45 metres
Travelling height	4.0 metres