

# CQD 1.6~2.5T 座驾

48V 大前移 48V large forward

额定载重: 1500-2500kg

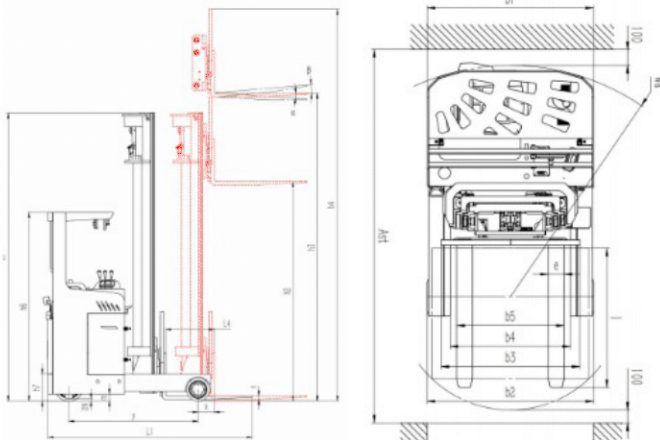
起升高度: 1600-8000mm

AC DRIVE 交流驱动控制系统

## Option/选配

- ◆ 拇指开关  
Thumb switch
- ◆ 高度预选  
Highly preselected
- ◆ 选配锂电池  
Optional lithium battery

提供非标定制



## Advantages / 优点

- ◆ 广角视野、高强度减震门架  
Wide-angle view, high-strength shock absorption door frame
- ◆ 美国 CURTIS 品牌驱动控制系统  
Curtis brand drive control system
- ◆ 中南传动变速箱  
South-central transmission
- ◆ 电子转向、轻便、静音  
Electronic steering, portability, mute
- ◆ 岛津品牌低噪音液压泵、阀  
Shimadzu brand low noise hydraulic pump, valve
- ◆ AC drive, No Carbon Brush, motor maintenance-free
- ◆ 电磁、再生制动系统  
Electromagnetic regenerative braking system
- ◆ 高、低压限制 电气过热保护  
High and low voltage limit, electric overheat protection
- ◆ 绕路故障检测 错误代码诊断  
Bypass fault detection, error code diagnosis
- ◆ 东海品牌 48V 大容量铅酸电池  
Donghai brand 48V high-capacity lead-acid battery

## Safe / 安全

- ◆ 驱动无极调速  
Drive stepless speed regulation
- ◆ 控制器多重自动保护系统  
Controller multiple automatic protection system
- ◆ 感应式安全座椅  
Inductive safety seat
- ◆ 弯道自动减速  
Automatic deceleration in corners
- ◆ 油缸安全切断阀  
Cylinder safety shut-off valve



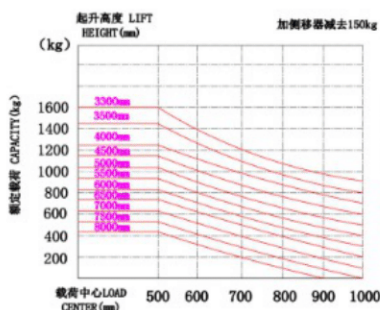
# 产品参数 Product parameter

型号	Models		CQD16	CQD20	CQD25
驱动方式	Drive mode		电动	电动	电动
驾驶方式	Driving Models		座驾	座驾	座驾
额定载荷	Rated load	Q (kg)	1600	2000	2500
载荷中心距	Center distance of load	C (mm)	500	500	500
前悬距	Front suspension	x (mm)	190	190	190
轴距	Wheelbase	y (mm)	1495	1495	1675
整车重量 (含电池)	Vehicle weight (including batteries)	kg	3150	3350	3430
空载时桥负荷, 驱动侧/承重侧	No-load axle load, drive side/load-bearing side	kg	1950/1200	2085/1265	2200/1230
满载时桥负荷, 货叉前移, 驱动侧/承重侧	Full axle load, fork forward, drive side/bearing side	kg	750/4000	680/4670	650/5280
满载时桥负荷, 货叉收回, 驱动侧/承重侧	Full axle load, fork recovery, drive side/bearing side	kg	1810/2940	1900/3450	2160/3770
轮胎类型	Type of tire		聚氨酯	聚氨酯	聚氨酯
轮胎尺寸, 承重侧	Tire size, load side	mm	φ 267x114	φ 267x114	φ 267x114
轮胎尺寸, 驱动侧	Tire dimensions, drive side	mm	φ 343x135	φ 343x135	φ 343x135
车轮数量, 前/后 (x=驱动轮)	Number of wheels, front/rear (x = drive wheels)		2/1X	2/1X	2/1X
轮距, 驱动侧	Wheelbase, drive side	mm	/	/	/
轮距, 承重侧	Wheelbase, load bearing side	mm	1156	1156	1156
货叉倾斜, 前倾/后仰	The fork tilts forward/backward	°	2/4.	2/4.	2/4.
门架闭合高度	Closing height of door frame	h1 (mm)	2795	2795	2795
自由起升高度	Free rise height	h2 (mm)	2045	2045	2045
起升高度	Elevation	h3 (mm)	6000	6000	6000
起升时门架最大高度 (含挡货架)	The maximum height of the door frame when lifting (including the shelf)	h4 (mm)	7025	7025	7025
护顶架高度	Height of roof support frame	h6 (mm)	2190	2190	2190
站板高度	Height of station board	h7 (mm)	316	316	316
整车长度	length of whole vehicle	L1 (mm)	2435	2435	2515
整车宽度	Vehicle width	b1/b2	1270	1270	1270
货叉尺寸	Fork size	l/e/s	1070/100/35	1070/122/40	1070/122/40
挡货架宽度	Width of shelf	b3 (mm)	1060	1060	1060
货叉外侧距	Outside distance of forks	b5 (mm)	240-800	266-820	266-820
支腿内侧距	Inner distance of outrigger leg	b4 (mm)	920	920	920
前移距离	Forward distance	L4 (mm)	560	560	660
门架离地间隙	Ground clearance of door frame	mm	95	95	95
整车离地间隙 (不含支撑块)	Vehicle ground clearance (without support block)	m (mm)	80	80	80
直角堆垛通道宽度 (托盘 1000x1200)1200 跨货叉方向	Right-angle stacking channel width (pallet 1000x1200)1200 cross-fork direction	Ast (mm)	2845	2845	2955
直角堆垛通道宽度 (托盘 800x1200)1200 沿货叉方向	Right-angle stacking channel width (tray 800x1200)1200 along the fork direction	Ast (mm)	2895	2895	2985
转弯半径	Turn radius	Wa (mm)	1775	1775	1955
行驶速度, 满/空载	Speed, full/empty	km/h	7.8/8	7.8/8	7.8/8
起升速度, 满/空载	Lifting speed, full/no load	mm/s	140/260	140/300	120/260
下降速度, 满/空载	Rate of descent, full/no load	mm/s	300/160	300/160	300/140
最大爬坡能力, 满/空载 (S2-5min)	Maximum climbing capacity, full/no load (S2-5MIN)	%	10	10	8/10.
制动方式	Braking mode		电磁制动	电磁制动	电磁制动
驱动电机功率 (S2-60min)	Drive Motor Power (S2-60MIN)	kw	4.5 (AC)	6.5 (AC)	6.5 (AC)
起升电机功率	Lift motor power	kw	6.3	6.3	8.6
蓄电池, 电压/额定容量	Battery, voltage/rated capacity	V/Ah	48/300	48/400	48/400
电池重量	Weight of battery	kg	480	665	665
转向方式	Steering mode		电转向	电转向	电转向
电池更换方式	Battery replacement method		侧拉式	侧拉式	侧拉式

备注: 悬挂侧移器, 总长 L1 增加 65mm, 堆垛通道宽度增加 65mm。悬挂侧移器, 货叉最大外侧距为 700mm。

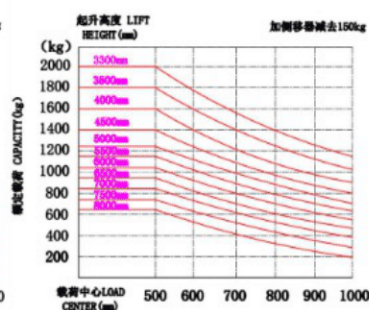
Remarks: the total length of L1 increased by 65mm, the width of stacking channel increased by 65mm. The maximum outside distance of the fork is 700mm.

载荷曲线图 Capacity Chart



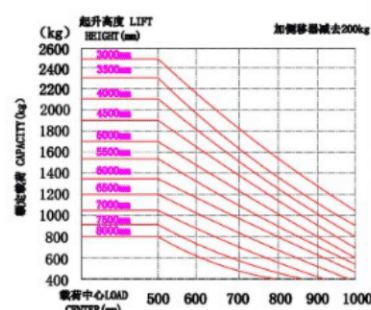
CQD16

载荷曲线图 Capacity Chart



CQD20

载荷曲线图 Capacity Chart



CQD25





# CQD 1.6~2.5T 侧站

**48V 大前移** 48V large forward

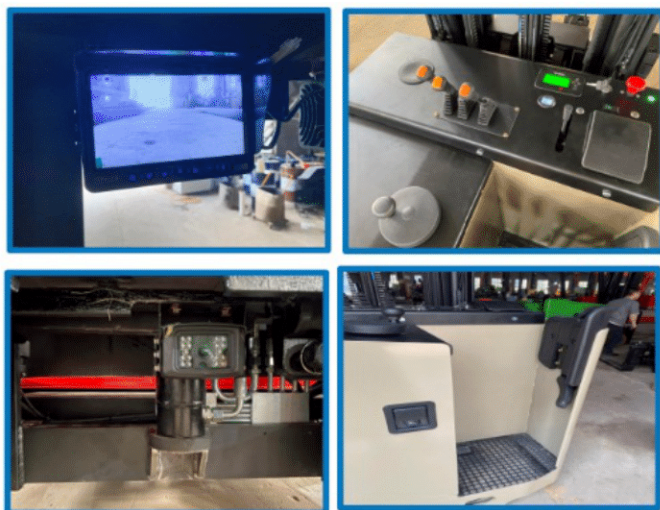
**额定载重：1600-2500kg**

**起升高度：3000-7500mm**

**AC DRIVE** 交流驱动控制系统

## Option/选配

- ◊ 拇指开关  
Thumb switch
- ◊ 高度预选  
Highly preselected
- ◊ 选配锂电池  
Optional lithium battery



## Advantages / 优点

- ◊ 广角视野、高强度减震门架  
Wide-angle view, high-strength shock absorption door frame
- ◊ 美国 CURTIS 品牌驱动控制系统  
Curtis brand drive control system
- ◊ 中南传动变速箱  
South-central transmission
- ◊ 电子转向、轻便、静音  
Electronic steering, portability, mute
- ◊ 岛津品牌低噪音液压泵、阀  
Shimadzu brand low noise hydraulic pump, valve
- ◊ AC drive, No Carbon Brush, motor maintenance-free
- ◊ 电磁、再生制动系统  
Electromagnetic regenerative braking system
- ◊ 高、低压限制 电气过热保护  
High and low voltage limit, electric overheat protection
- ◊ 绕路故障检测 错误代码诊断  
Bypass fault detection, error code diagnosis
- ◊ 东海品牌 48V 大容量铅酸电池  
Donghai brand 48V high-capacity lead-acid battery

## Safe / 安全

- ◊ 驱动无极调速  
Drive stepless speed regulation
- ◊ 控制器多重自动保护系统  
Controller multiple automatic protection system
- ◊ 感应式安全座椅  
Inductive safety seat
- ◊ 弯道自动减速  
Automatic deceleration in corners
- ◊ 油缸安全切断阀  
Cylinder safety shut-off valve
- ◊ 弯道自动减速装置  
Automatic speed reducer for bend





# 产品参数 Product parameter

型号	Models		CQD16	CQD20	CQD25
驱动方式	Drive mode		电动	电动	电动
驾驶方式	Driving Models		侧站	侧站	侧站
额定载荷	Rated load	Q (kg)	1600	2000	2500
载荷中心距	Center distance of load	C (mm)	500	500	500
前悬距	Front suspension	x (mm)	180	180	180
轴距	Wheelbase	y (mm)	1535	1535	1715
整车重量 (含电池)	Vehicle weight (including batteries)	kg	3320	3500	3600
空载时桥负荷, 驱动侧/承重侧	No-load axle load, drive side/load-bearing side	kg	2045/1275	2160/1340	2340/1260
满载时桥负荷, 货叉前移, 驱动侧/承重侧	Full axle load, fork forward, drive side/bearing side	kg	945/3975	810/4690	1175/4295
满载时桥负荷, 货叉收回, 驱动侧/承重侧	Full axle load, fork recovery, drive side/bearing side	kg	1970/2950	2030/3470	2420/3680
轮胎类型	Type of tire		聚氨酯	聚氨酯	聚氨酯
轮胎尺寸, 承重侧	Tire size, load side	mm	φ 267x114	φ 267x114	φ 267x114
轮胎尺寸, 驱动侧	Tire dimensions, drive side	mm	φ 343x135	φ 343x135	φ 343x135
稳定轮尺寸	Dimension of stabilizing wheel	mm	φ 180x76	φ 180x76	φ 180x76
车轮数量, 前/后 (x=驱动轮)	Number of wheels, front/rear (x = drive wheels)		2/1X-2	2/1X-2	2/1X-2
轮距, 驱动侧	Wheelbase, drive side	mm	805	805	805
轮距, 承重侧	Wheelbase, load bearing side	mm	1156	1156	1156
货叉倾斜, 前倾/后仰	The fork tilts forward/backward	°	2/4.	2/4.	2/4.
门架闭合高度	Closing height of door frame	h1 (mm)	3345	3345	3345
自由起升高度	Free rise height	h2 (mm)	2535	2535	2535
起升高度	Elevation	h3 (mm)	7500	7500	7500
起升时门架最大高度 (含挡货架)	The maximum height of the door frame when lifting (including the shelf)	h4 (mm)	8515	8515	8515
护顶架高度	Height of roof support frame	h6 (mm)	2270	2270	2270
站板高度	Height of station board	h7 (mm)	360	360	360
整车长度	length of whole vehicle	L1 (mm)	2440	2440	2520
整车宽度	Vehicle width	b1/b2	1260/1270	1260/1270	1260/1270
货叉尺寸	Fork size	l/e/s	1070/100/35	1070/122/40	1070/122/40
挡货架宽度	Width of shelf	b3 (mm)	1060	1060	1060
货叉外侧距	Outside distance of forks	b5 (mm)	240-800	266-820	266-820
支腿内侧距	Inner distance of outrigger leg	b4 (mm)	920	920	920
前移距离	Forward distance	L4 (mm)	560	560	660
门架离地间隙	Ground clearance of door frame	mm	95	95	95
整车离地间隙	Vehicle ground clearance (without support block)	m (mm)	80	80	80
直角堆垛通道宽度 (托盘 1000x1200) 1200 跨货叉方向	Right-angle stacking channel width (pallet 1000x1200) 1200 cross-fork direction	Ast (mm)	2865	2865	2970
直角堆垛通道宽度 (托盘 800x1200) 1200 沿货叉方向	Right-angle stacking channel width (tray 800x1200) 1200 along the fork direction	Ast (mm)	2915	2915	3000
转弯半径	Turn radius	Wa (mm)	1805	1805	1980
行驶速度, 满/空载	Speed, full/empty	km/h	7.8/8	7.8/8	7.8/8
起升速度, 满/空载	Lifting speed, full/no load	mm/s	140/260	140/300	120/260
下降速度, 满/空载	Rate of descent, full/no load	mm/s	300/160	300/160	300/140
最大爬坡能力, 满/空载 (S2-5min)	Maximum climbing capacity, full/no load (S2-5MIN)	%	10	10	8/10.
制动方式	Braking mode		电磁制动	电磁制动	电磁制动
驱动电机功率 (S2-60min)	Drive Motor Power (S2-60MIN)	kw	4.5 (AC)	6.5 (AC)	6.5 (AC)
起升电机功率	Lift motor power	kw	6.3	6.3	8.6
蓄电池, 电压/额定容量	Battery, voltage/rated capacity	V/Ah	48/300	48/400	48/420
电池重量	Weight of battery	kg	480	655	665
转向方式	Steering mode		电转向	电转向	电转向
电池更换方式	Battery replacement method		侧拉式	侧拉式	侧拉式

备注: 悬挂侧移器, 总长 L1 增加 65mm, 前移距离减少 60mm, 堆垛通道宽度增加 65mm。悬挂侧移器, 货叉最大外侧距为 700mm。  
 Remarks: the length of L1 increased by 65mm, the forward distance decreased by 60mm, and the width of stacking channel increased by 65mm. The maximum outside distance of the fork is 700mm.

