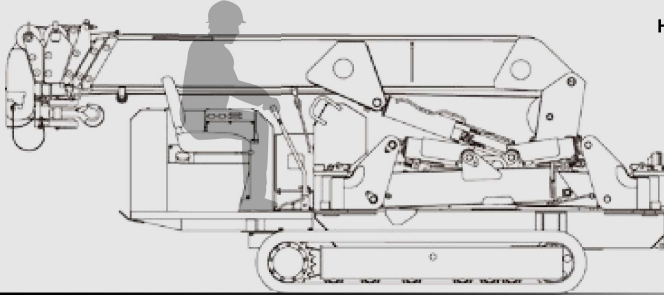


URW376C

URW376C features a six-section hydraulic boom to allow a maximum hook height of 14.9m.



Max.
14.9m
Hook height (Approx.)
(Above ground level)

with Safe load indicator (Option)



Max.
3.03t
x2.5m
Lifting capacity

3870kg
Mass of crane

Max.
14.45m
Working radius



Radio remote control

Photo: Standard model

SPECIFICATIONS [with Electric power unit]

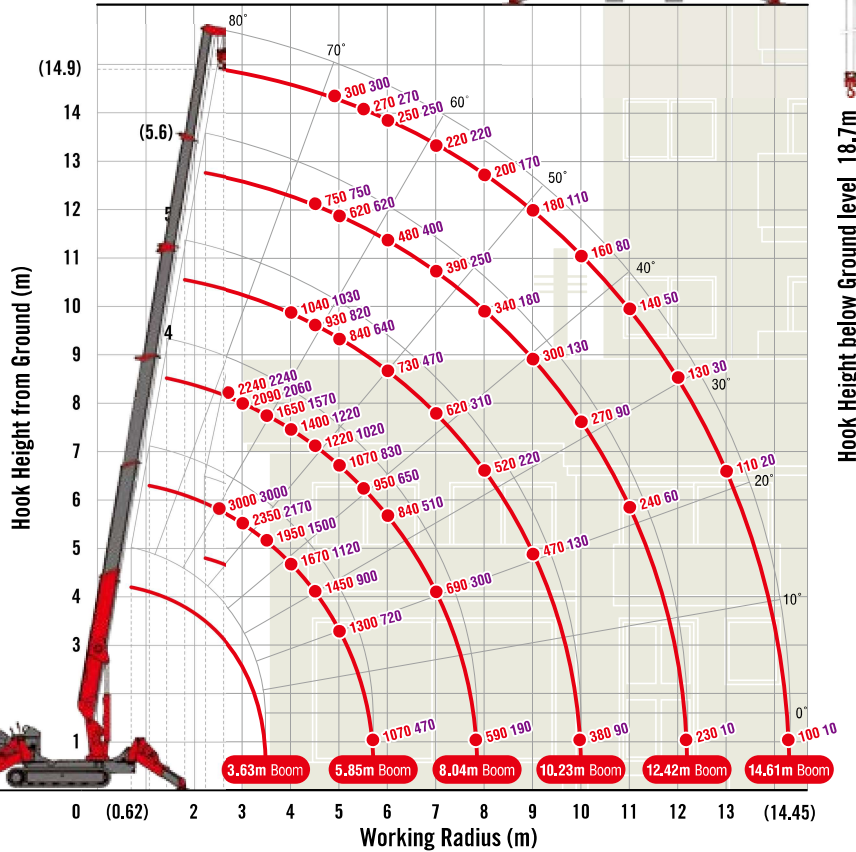
Crane model	URW376C4	
	A (Standard)	E-1(Safe load indicator)
Lifting capacity	Max. 3.03t at 2.5m	
Working radius	Min. 0.62m, Max. 14.45m	
Hook height (Approx.)	Max. 14.9m	
	Above ground level	Max. 18.7m (with 4-part line)
Below ground level	Min. 3.63m to Max. 14.61m	
	Length	10.98m / 23 sec. [50Hz] 10.98m / 40 sec. [60Hz] 10.98m / 33.5 sec.
Boom	Extending speed	0° to 80° / 10 sec. [50Hz] 0° to 80° / 18 sec. [60Hz] 0° to 80° / 15 sec.
	Raising angle / speed	6-section box beam type telescoping boom
Structure	Single line speed	68 m/min (at 4th layer) [50Hz] 34 m/min (at 4th layer) [60Hz] 40 m/min (at 4th layer)
	Hook speed	17 m/min (at 4th layer with 4-part line) [50Hz] 8.5 m/min (at 4th layer with 4-part line) [60Hz] 10 m/min (at 4th layer with 4-part line)
Winch	Wire rope	Construction : IWRC 6 x WS(26) GRADE B / Diameter x Length : 8mm x 85m / Breaking strength : 42.4kN (4320 kgf)
	Hook block	3t capacity, 2 sheaves with safety latch
Slewing	Range	360° continuous rotation on a ball bearing race
	Speed	2.5 rpm [50Hz] 2.1 rpm [60Hz] 2.5 rpm
Outriggers	Horizontal, Vertical	A double acting hydraulic cylinder, direct pushing type (Directly connected with hydraulic automatic lock device)
	Type	Variable delivery piston pump
Hydraulic pump	Rated pressure	For crawling: 21.6 MPa [220 kgf/cm ²] For crane: 20.6 MPa [210 kgf/cm ²]
	Hydraulic oil tank capacity	75 liters
Safety devices <small>[with Safe load indicator]</small>	Pressure relief valve for hydraulic circuit / Counterbalance valves for boom raising and boom telescoping cylinders / Pilot-operated check valves for outrigger cylinders (Horizontal) / Double pilot-operated check valves for outrigger cylinders (Vertical) / Boom angle indicator with load indicator / Hook safety latch / Automatic mechanical brake for winch / Automatic stop for overwinding / Overwinding alarm / Automatic stop for leaving minimum wire rope / Emergency stop button / Inter-lock device of crane and crawling levers / Level / Three colored lamp / Headlight / Digital load meter* / Automatic stop for overloading* / Safe load indicator / Inter-lock device of crane and outriggers / Outrigger ground contact detector	

* Only for standard model

MINI CRAWLER CRANE

WORKING RANGE & NET RATED LOADS (kg)

Outrigger ● Max-extended NOT max-extended



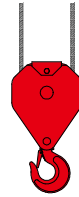
with Electric power unit (Option)



Rated power	7.5kW (3-phase 4 poles)
Voltage	AC 200V or 400V (50Hz / 60Hz)

*No cable included.

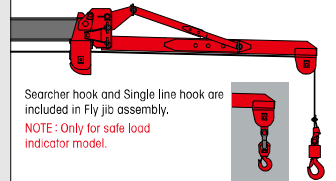
2-part line hook block (Option)



NOTE: Only for safe load indicator model.

Lifting capacity	Max. 1.52t at 4.5m
Hook height below ground level	38.7m

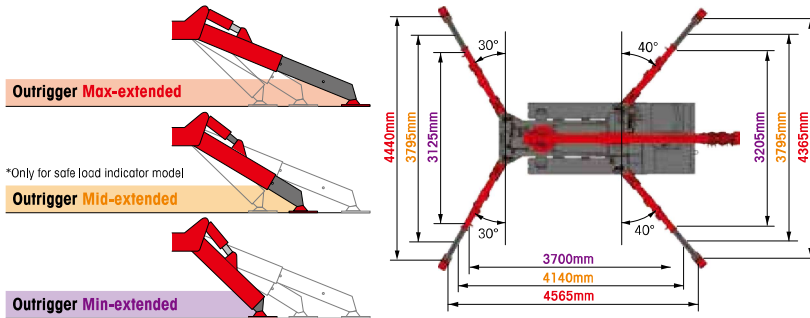
Fly jib assembly (Option)



Searcher hook and Single line hook are included in Fly jib assembly.
NOTE: Only for safe load indicator model.

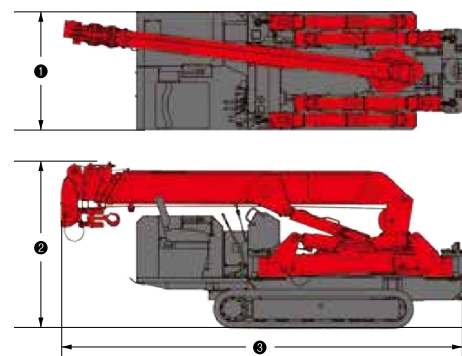
Length	2m
Lifting capacity	Max. 710kg
Tilt angles	0°, 20°, 40°, 60°

OUTRIGGER POSITIONS



*Only for safe load indicator model

DIMENSIONS [with Electric power unit]



CRAWLING GEAR [with Electric power unit]

Crane model	URW376C4
Crawling speed	0-3 km/h, forward / backward [50Hz] 0-1.3 km/h [60Hz] 0-1.5 km/h
Hill climbing ability	23°
Tread length × width	1750mm × 300mm
Ground contact pressure	36.3 kPa {0.37 kgf/cm ² } 37.3 kPa {0.38 kgf/cm ² }
Engine manufacturer / model	Yanmar / 3TNV80F
Displacement	1266cm ³
Maximum output	15.2kW(20.7PS) / 2500 rpm, Rated output
Fuel	Diesel
Fuel tank capacity	40 liters
Steering	Hydraulic drive independent of left / right

Crane model	URW376C4
① Total width	1300mm
② Total height	1805mm
③ Total length	4340mm
Mass of crane	3870kg [4020kg]