

ZAXIS-3 series

HITACHI

ZAXIS  
70

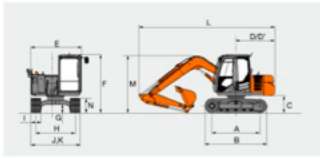


## HYDRAULIC EXCAVATOR

- **Model Code** : ZX70-3 / ZX70LC-3 / ZX80LCK-3
- **Engine Rated Power** : 39.4 kW (52.8 HP) ISO 9249, net
- **Operating Weight** : ZX70-3 : 6 500 - 7 900 kg  
ZX70LC-3 : 6 600 - 8 000 kg  
ZX80LCK-3 : 7 400 - 8 200 kg
- **Backhoe Bucket** : SAE, PCSA Heaped : 0.13 - 0.33 m<sup>3</sup>  
CECE Heaped : 0.12 - 0.29 m<sup>3</sup>

# SPECIFICATIONS

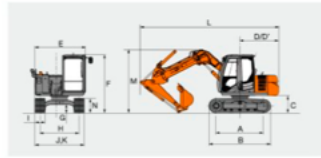
## DIMENSIONS



	Unit: mm		
	ZX70-5	ZX70LC-5	ZX80LC-5
A Distance between tumbler	2 140	2 290	2 290
B Undercarriage length	2 765	2 900	2 900
*C Counterweight clearance	760		
D Rear-end swing radius	1 750		
D' Rear-end length	1 750		
E Overall width of upperstructure	2 260		
F Overall height of cab	2 600	2 730	
*G Min. ground clearance	790		
H Track gauge	1 750	1 870	
I Track shoe width	G 450		
J Undercarriage width	2 200	2 300	
K Overall width	2 260	2 300	
L Overall length			
With 1.62 m arm	6 080	—	—
With 2.12 m arm	6 100	6 470	—
M Overall height of boom			
With 1.62 m arm	2 550	—	—
With 2.12 m arm	2 680 (2 700 without bucket)	2 600	—
*N Track height with triple grouser shoes		655	

\* Excluding track shoe lug G Triple grouser shoe

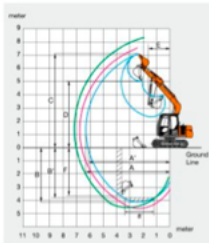
## DIMENSIONS : Off-set front



	Unit: mm	
	ZX70-5	ZX70LC-5
A Distance between tumbler	2 140	2 290
B Undercarriage length	2 765	2 900
*C Counterweight clearance	760	
D Rear-end swing radius	1 750	
D' Rear-end length	1 750	
E Overall width of upperstructure	2 260	
F Overall height of cab	2 600	2 730
*G Min. ground clearance	790	
H Track gauge	1 750	1 870
I Track shoe width	G 450	
J Undercarriage width	2 200	2 300
K Overall width	2 260	2 300
L Overall length		
With 1.62 m arm		6 210
M Overall height of boom		
With 1.62 m arm		2 870
*N Track height with triple grouser shoes		655

\* Excluding track shoe lug G Triple grouser shoe

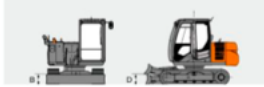
## WORKING RANGES



	Unit: mm		
	ZX70-5 / ZX70LC-5	ZX80LC-5	
Boom length	9.02 m / 2.96 m	3.72 m / 1.22 m	4.0 m / 1.31 m
Arm length	1.62 m / 0.54 m	2.12 m / 0.70 m	2.12 m / 0.70 m
A Max. digging reach	6 320	6 810	7 130
A' Max. digging reach (on ground)	6 170	6 670	7 000
B Max. digging depth	4 170	4 670	4 460
B' Max. digging depth (if level)	3 800	4 365	4 220
C Max. cutting height	7 190	7 550	8 210
D Max. dumping height	5 080	5 490	6 080
E Min. swing radius	1 750	3 080	1 670
F Max. vertical wall	3 730	4 290	4 100
Bucket digging force	ISO	55 kN (5 800 kgf)	—
SAE / PCSA	—	47 kN (4 800 kgf)	—
Arm crowd force	ISO	38 kN (3 900 kgf)	32 kN (3 300 kgf)
SAE / PCSA	36 kN (3 700 kgf)	31 kN (3 200 kgf)	31 kN (3 200 kgf)

Excluding track shoe lug

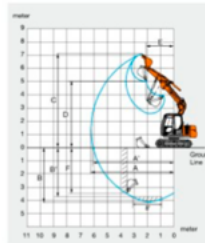
## ZX70-5 / ZX70LC-5 / ZX80LC-5 with Blade (Optional)



A Overall width of blade	ZX70-5 : 2 200 mm
B Overall height of blade	ZX70LC-5 / ZX80LC-5 : 480 mm
C Blade distance	1 860 mm
*D Max. raising height above ground	360 mm
*E Max. lowering depth from ground	300 mm

\* Excluding track shoe lug

## WORKING RANGES : Off-set front



	Unit: mm	
	ZX70-5 / ZX70LC-5	ZX80LC-5 with Off-set front
Arm length	1.62 m	2.12 m
Off-set distance	0 m	Max.
A Max. digging reach	6 320	6 880
A' Max. digging reach (on ground)	6 170	6 710
B Max. digging depth	4 160	3 710
B' Max. digging depth (if level)	3 790	3 330
C Max. cutting height	7 130	6 780
D Max. dumping height	5 050	4 700
E Min. swing radius	2 150	2 160 / 2 310
F Max. vertical wall	3 580	3 090
G Left side off-set distance	—	1 150
H Right side off-set distance	—	1 150
Bucket digging force	ISO	55 kN (5 800 kgf)
SAE / PCSA	—	47 kN (4 800 kgf)
Arm crowd force	ISO	38 kN (3 900 kgf)
SAE / PCSA	—	36 kN (3 700 kgf)

Excluding track shoe lug