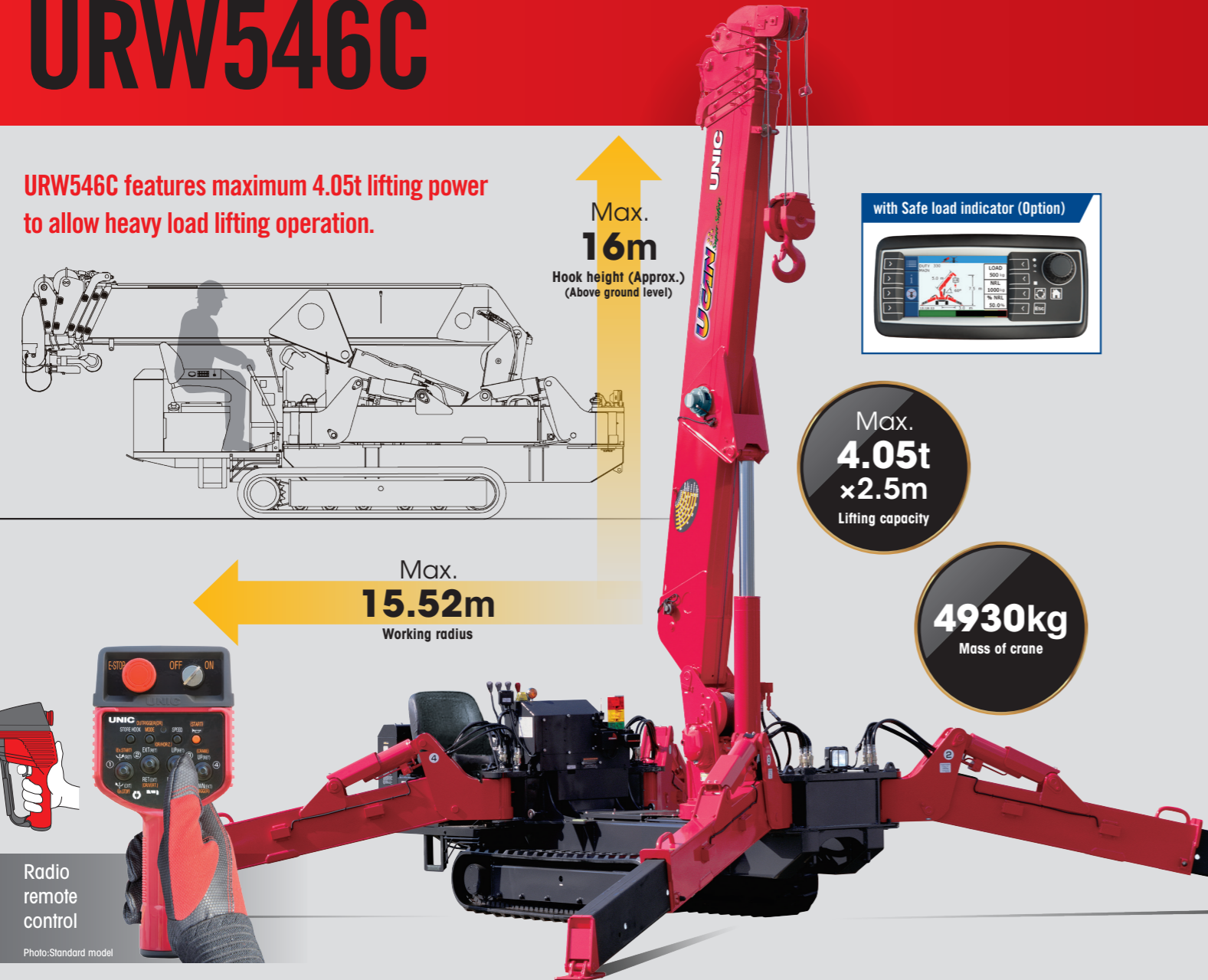


# URW546C

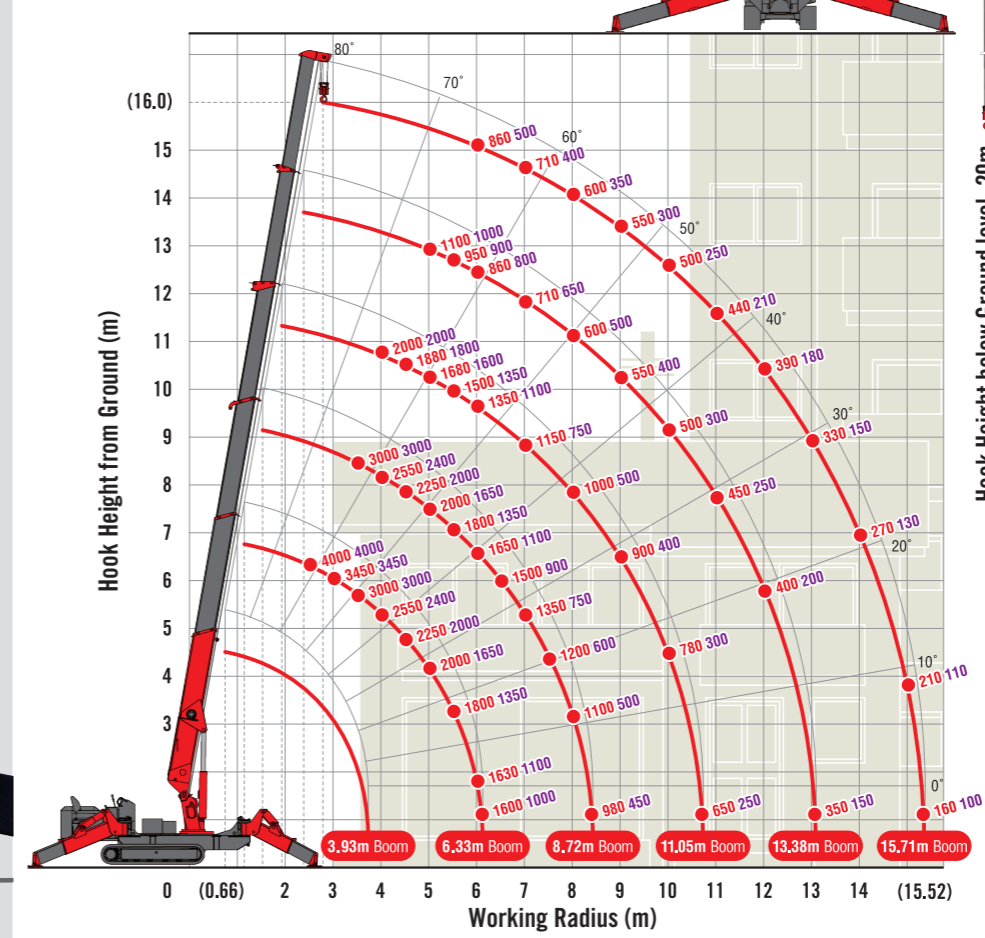
# MINI CRAWLER CRANE

URW546C features maximum 4.05t lifting power to allow heavy load lifting operation.



## WORKING RANGE & NET RATED LOADS (kg)

Outrigger ● Max-extended NOT max-extended



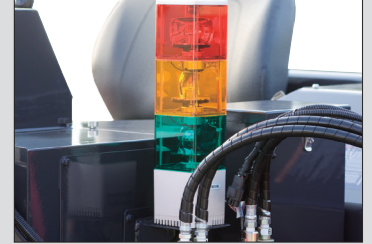
with Electric power unit (Option)



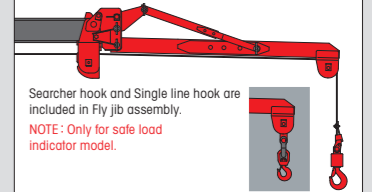
Rated power 7.5kW (3-phase 4 poles)  
Voltage AC 200V or 400V (50Hz / 60Hz)

\*No cable included.

Three colored lamp



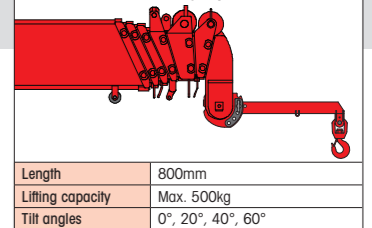
Fly jib assembly (Option)



Searcher hook and Single line hook are included in Fly jib assembly.  
NOTE: Only for safe load indicator model.

Length	2m
Lifting capacity	Max. 710kg
Tilt angles	0°, 20°, 40°, 60°

Searcher hook assembly (Option)

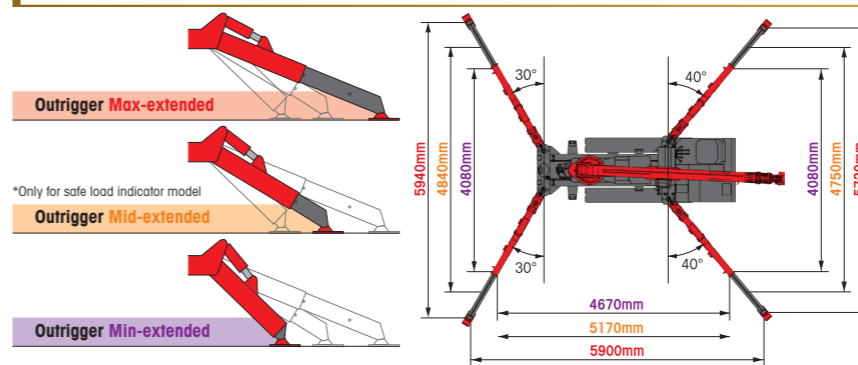


## SPECIFICATIONS [with Electric power unit]

Crane model	URW546C4	
	A (Standard)	E-1(Safe load indicator)
Lifting capacity	Max. 4.05t at 2.5m	
Working radius	Min. 0.66m, Max. 15.52m	
Hook height (Approx.)	Above ground level	Max. 16m
	Below ground level	Max. 20m with 4-part line
Boom	Length	Min. 3.93m to Max. 15.71m
	Extending speed	11.78m / 35 sec. [50Hz] 11.78m / 57 sec. [60Hz] 11.78m / 48 sec.
Raising angle / speed	0° to 80° / 18 sec.	[50Hz] 0° to 80° / 30 sec. [60Hz] 0° to 80° / 25 sec.
	Structure	6-section box beam type telescoping boom
Winch	Single line speed	44 m/min (at 4th layer) [50Hz] 22 m/min (at 4th layer) [60Hz] 26 m/min (at 4th layer)
	Hook speed	11 m/min (at 4th layer with 4-part line) [50Hz] 5.5 m/min (at 4th layer with 4-part line) [60Hz] 6.5 m/min (at 4th layer with 4-part line)
Slewing	Range	360° continuous rotation on a ball bearing race
	Speed	2.5 rpm [50Hz] 2.0 rpm [60Hz] 2.3 rpm
Outriggers	Horizontal, Vertical	A double acting hydraulic cylinder, direct pushing type (Directly connected with hydraulic automatic lock device)
	Type	Variable delivery piston pump
Hydraulic pump	Rated pressure	For crawling: 21.6 MPa [220 kgf/cm <sup>2</sup> ] For crane: 20.6 MPa [210 kgf/cm <sup>2</sup> ]
	Hydraulic oil tank capacity	75 liters
Safety devices [with Safe load indicator]	Pressure relief valve for hydraulic circuit / Counterbalance valves for boom raising and boom telescoping cylinders / Pilot-operated check valves for outrigger cylinders (Horizontal) / Double pilot-operated check valves for outrigger cylinders (Vertical) / Boom angle indicator with load indicator / Hook safety latch / Automatic mechanical brake for winch / Automatic stop for overwinding / Overwinding alarm / Automatic stop for leaving minimum wire rope / Emergency stop button / Inter-lock device of crane and crawling levers / Level / Three colored lamp / Headlight / Digital load meter* / Automatic stop for overloading* / Safe load indicator / Inter-lock device of crane and outriggers / Outrigger ground contact detector	

\* Only for standard model

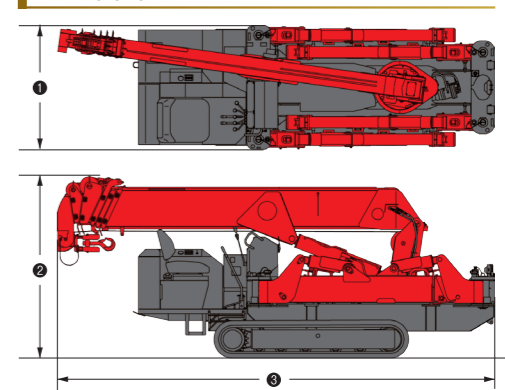
## OUTRIGGER POSITIONS



## CRAWLING GEAR [with Electric power unit]

Crane model	URW546C4
Crawling speed	0~3 km/h, forward / backward [50Hz] 0~1.3 km/h [60Hz] 0~1.5 km/h
Hill climbing ability	23°
Tread length x width	1750mm x 300mm
Ground contact pressure	46.1 kPa [0.47 kgf/cm <sup>2</sup> ] 47.1 kPa [0.48 kgf/cm <sup>2</sup> ]
Engine manufacturer / model	Yanmar / 3TNV80F
Displacement	1266cc
Maximum output	15.2kW(20.7PS) / 2500 rpm, Rated output
Fuel	Diesel
Fuel tank capacity	40 liters
Steering	Hydraulic drive independent of left / right

## DIMENSIONS [with Electric power unit]



Crane model	URW546C4
1 Total width	1380mm
2 Total height	2035mm
3 Total length	4870mm
Mass of crane	4930kg [5080kg]