

# UR-W376C

# UNIC MINI-CRAWLER CRANE

UR-W376C features a six-section hydraulic boom to allow a maximum hook height of 14.9m.

The middle size UNIC mini-crawler crane can be operated either from the onboard operator seat or from a distance using a remote control. Its class-leading boom length of 14.61m brings wide working radius and excellent lifting height.

Max 14.9m  
Hook height (Approx.)  
(Above ground level)

Max 3.03t  
x2.5m  
Lifting capacity

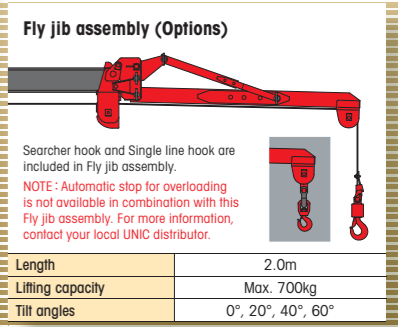
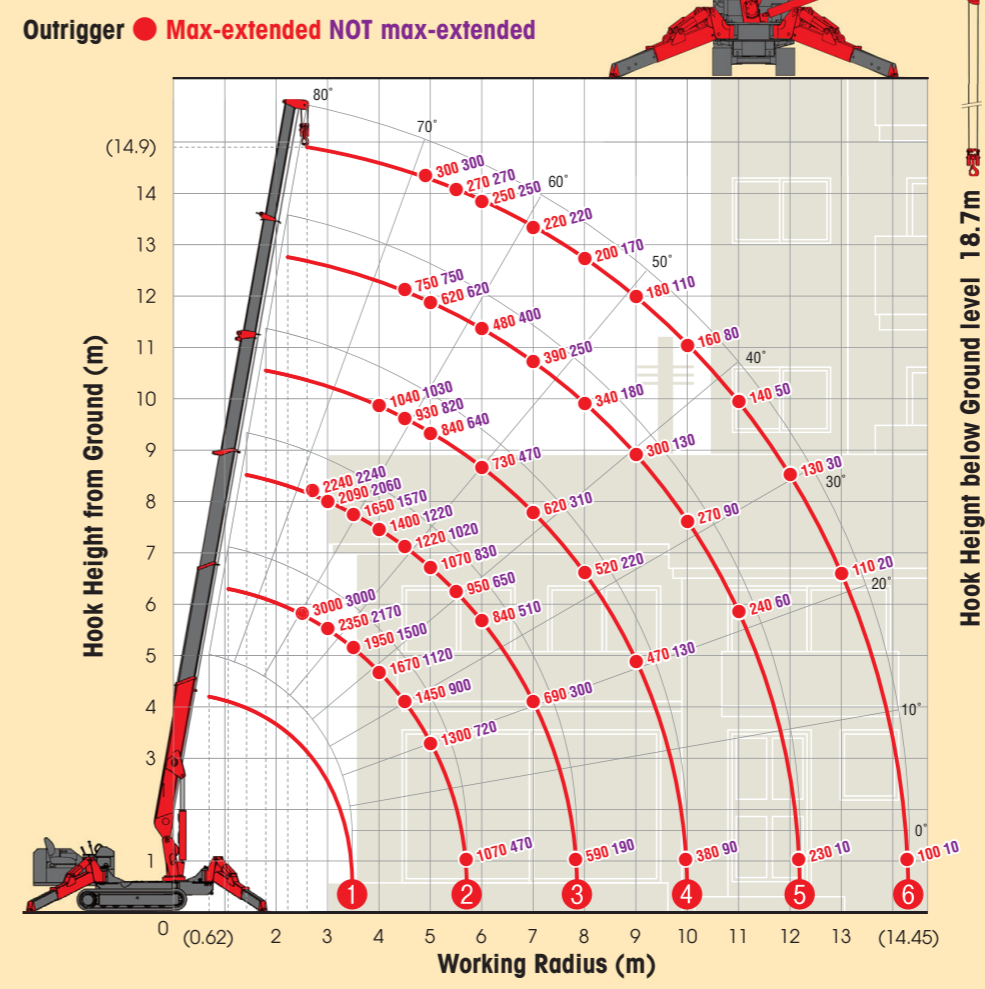
Max 14.45m  
Working radius

3860kg  
Mass of crane

Radio remote control



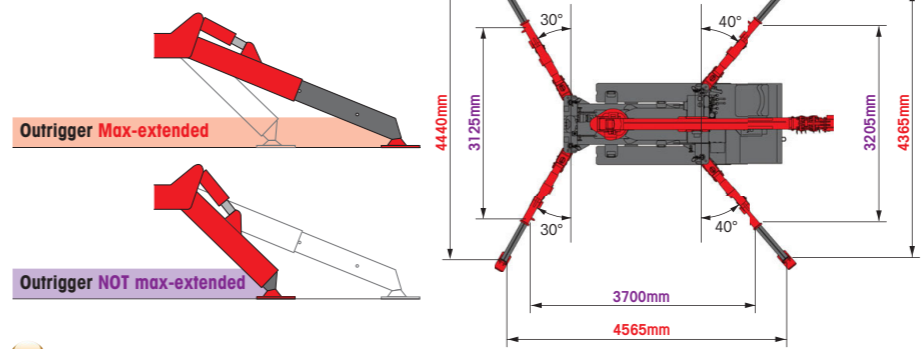
## WORKING RANGE & NET RATED LOADS (kg)



## SPECIFICATIONS

Crane model	UR-W376C2
Lifting capacity	Max. 3.03t at 2.5m
Working radius	Min. 0.62m, Max. 14.45m
Hook height (Approx.)	Above ground level: Max. 14.9m Below ground level: Max. 18.7m with 4-part line
Boom	Length: Min. 3.63m to Max. 14.61m Extending speed [with electric power unit]: 10.98m / 23.0 sec. [50Hz] 10.98m / 40.0 sec. [60Hz] 10.98m / 33.5 sec. Raising angle / speed [with electric power unit]: 0° to 80° / 10.0 sec. [50Hz] 0° to 80° / 18.0 sec. [60Hz] 0° to 80° / 15.0 sec. Structure: 6-section box beam type telescoping boom
Winch	Single line speed [with electric power unit]: 68.0 m/min (at 4th layer) [50Hz] 34.0 m/min (at 4th layer) [60Hz] 40.0 m/min (at 4th layer) Hook speed [with electric power unit]: 17.0 m/min (at 4th layer with 4-part line) [50Hz] 8.5 m/min (at 4th layer with 4-part line) [60Hz] 10.0 m/min (at 4th layer with 4-part line) Structure: Hydraulic motor driven, spur gear reduction, with automatic mechanical brake and wire rope retaining roller Wire rope: Construction : IWRC 6 x WS(26) GRADE B / Diameter x Length : 8mm x 85.0m / Breaking strength : 42.4kN (4320 kgf) Hook block: 3.00t capacity, 2 sheaves with safety latch
Slewing	Range: 360° continuous rotation on a ball bearing race Speed [with electric power unit]: 2.5 rpm [50Hz] 2.1 rpm [60Hz] 2.5 rpm Structure: Hydraulic motor driven, worm gear reduction, spur gear reduction, and worm self-locking brake (supported by ball bearings)
Outriggers	Horizontal, Vertical: A double acting hydraulic cylinder, direct pushing type (Directly connected with hydraulic automatic lock device) Type: Variable delivery piston pump Rated pressure: 21.6 MPa [220 kgf/cm <sup>2</sup> ] Rated delivery: 60 liters/min Rated revolution: 2500 rpm
Hydraulic oil tank capacity	75 liters
Safety devices	Pressure relief valve for hydraulic circuit / Counterbalance valves for boom raising and boom telescoping cylinders / Pilot-operated check valves for outrigger cylinders (Horizontal) Double pilot-operated check valves for outrigger cylinders (Vertical) / Boom angle indicator with load indicator / Hook safety latch / Automatic mechanical brake for winch Automatic stop for overwinding / Overwinding alarm / Automatic stop for leaving minimum wire rope / Emergency stop button / Inter-lock device of crane and crawling levers Inter-lock device of crane and outriggers / Level / Automatic stop for overloading (KM-100) / Digital load meter / Three colored lamp / Headlight / Boom outrigger monitor lamp

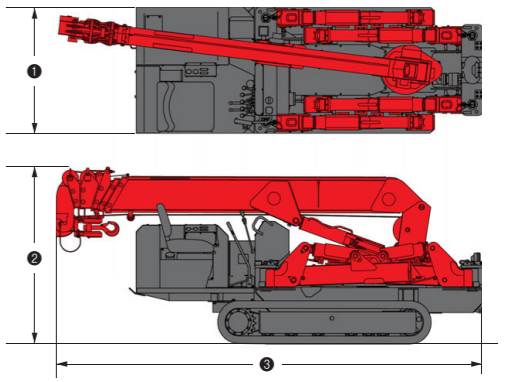
## OUTRIGGER POSITIONS



## CRAWLING GEAR

Crane model	UR-W376C2
Crawling speed [with electric power unit]	0-3.0 km/h, forward / backward [50Hz] 0-1.3 km/h [60Hz] 0-1.5 km/h
Hill climbing ability	23°
Tread length	1750mm
Ground contact pressure [with electric power unit]	36.3 kPa (0.37 kgf/cm <sup>2</sup> ) [50Hz] 37.3 kPa (0.38 kgf/cm <sup>2</sup> ) [60Hz]
Engine manufacturer / model	Yanmar / 3TNV76
Displacement	1115cc
Maximum output	15.17kW(20.6PS) / 2500 rpm, Rated output
Fuel	Diesel
Fuel tank capacity	40 liters
Steering	Hydraulic drive independent of left / right
Starter	Starter motor

## DIMENSIONS



Crane model	UR-W376C2
① Total width	1300mm
② Total height	1800mm
③ Total length	4340mm
Mass of crane	3860kg [4010kg] [with electric power unit]

Electric power unit specifications

Rated power	7.5kW (3-phase 4 poles)
Voltage	AC 200V or 400V (50Hz / 60Hz) 3 phase 4P

\*Not included any cables.