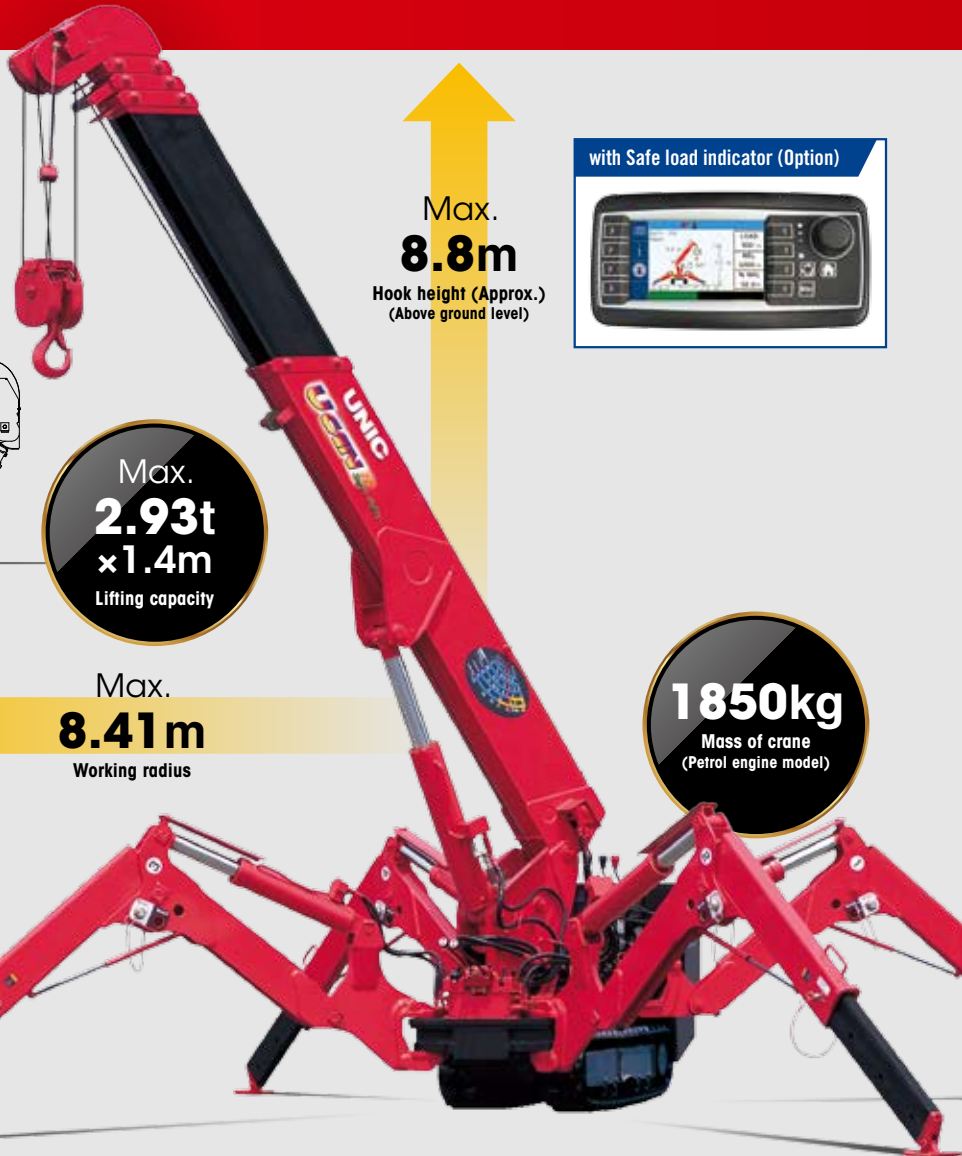
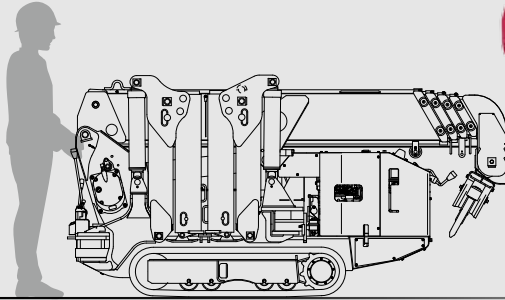


# URW295C

URW295C is narrow enough to allow access through standard size single doorway, but with 2.93t of lifting power.



Max.  
**8.8m**  
Hook height (Approx.)  
(Above ground level)

Max.  
**2.93t**  
**x 1.4m**  
Lifting capacity



with Safe load indicator (Option)

Max.  
**8.41m**  
Working radius

**1850kg**  
Mass of crane  
(Petrol engine model)



Radio remote control

Photo: Standard model

## SPECIFICATIONS [with Electric power unit]

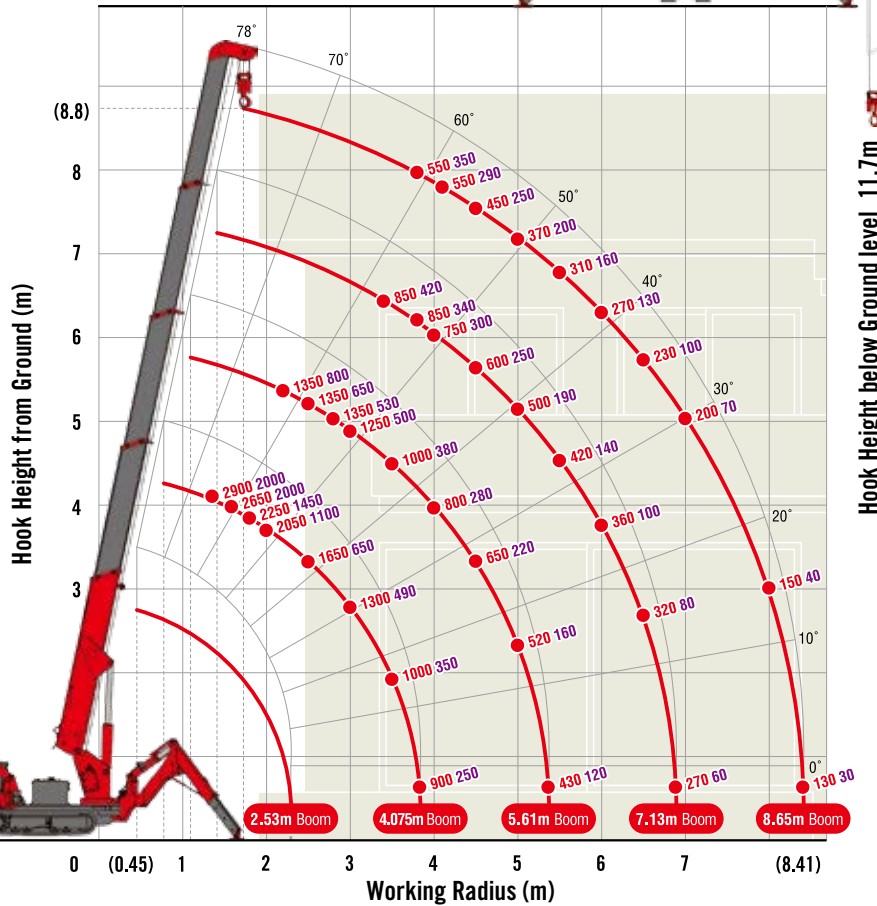
Crane model	URW295CP2		URW295C4	
	A (Standard)	E-1(Safe load indicator)	A (Standard)	E-1(Safe load indicator)
Lifting capacity	Max. 2.93t at 1.4m			
Working radius	Min. 0.45m, Max. 8.41m			
Hook height (Approx.)	Above ground level Max. 8.8m			
	Below ground level Max. 11.7m (with 4-part line)			
Boom	Length Min. 2.53m to Max. 8.65m		Min. 2.53m to Max. 8.65m Min. 2.70m to Max. 8.65m	
	Extending speed 6.12m / 20 sec. [50Hz] 6.12m / 34 sec. [60Hz] 6.12m / 28 sec.		6.12m / 22 sec. 5.95m / 21 sec. [50Hz] 5.95m / 33 sec. [60Hz] 5.95m / 28 sec.	
	Raising angle / speed 0° to 78° / 11 sec. [50Hz] 0° to 78° / 18 sec. [60Hz] 0° to 78° / 15 sec.		0° to 78° / 12 sec. [50Hz] 0° to 78° / 18 sec. [60Hz] 0° to 78° / 15 sec.	
Structure	5-section box beam type telescoping boom			
Winch	Single line speed 40 m/min (at 4th layer) [50Hz] 22 m/min (at 4th layer) [60Hz] 27 m/min (at 4th layer)			
	Hook speed 10 m/min (at 4th layer with 4-part line) [50Hz] 5.5 m/min (at 4th layer with 4-part line) [60Hz] 6.7 m/min (at 4th layer with 4-part line)			
	Wire rope Construction : IWRC 6 x WS(26) GRADE B / Diameter x Length : 8mm x 54m / Breaking strength : 42.4kN [4320 kgf]			
	Hook block 2.9t capacity, 2 sheaves with safety latch			
Stewing	Range 360° continuous rotation on a ball bearing race			
	Speed 1.5 rpm			
Outriggers	2-section (with damper) for bend and 5-section extension(front) / 4-section extension(rear). Double acting hydraulic cylinders with pilot-operated check valves, direct pushing type (Directly connected with hydraulic automatic lock device)			
Hydraulic Pump	Type Variable delivery piston pump			
	Rated pressure For crawling: 21.6 MPa [220 kgf/cm <sup>2</sup> ] For crane: 20.6 MPa [210 kgf/cm <sup>2</sup> ]			
Hydraulic oil tank capacity	27 liters			
Safety devices [with Safe load indicator]	Pressure relief valve for hydraulic circuit / Counterbalance valves for boom raising and boom telescoping cylinders / Double pilot-operated check valves for outrigger cylinders / Boom angle indicator with load indicator / Hook safety latch / Automatic mechanical brake for winch / Automatic stop for overwinding / Overwinding alarm / Emergency stop button / Inter-lock device of crane and crawling levers / Level / Stewing restriction limit switch / Turn over prevention device* / Load meter* / Safe load indicator / Inter-lock device of crane and outriggers / Outrigger ground contact detector / Three colored lamp / Headlight			

\* Only for standard model

# MINI CRAWLER CRANE

## WORKING RANGE & NET RATED LOADS (kg)

Outrigger ● Max-extended NOT max-extended



Hook Height below Ground level 11.7m

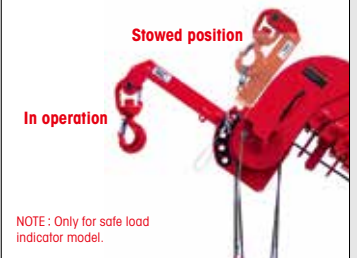
with Electric power unit (Option)



Rated power	3.7kW (3-phase 4 poles)
Voltage	AC 200V or 400V (50Hz / 60Hz)

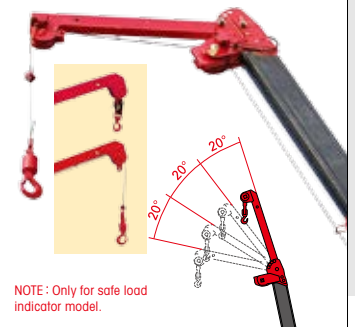
\*No cable included.

Searcher hook assembly (Option)



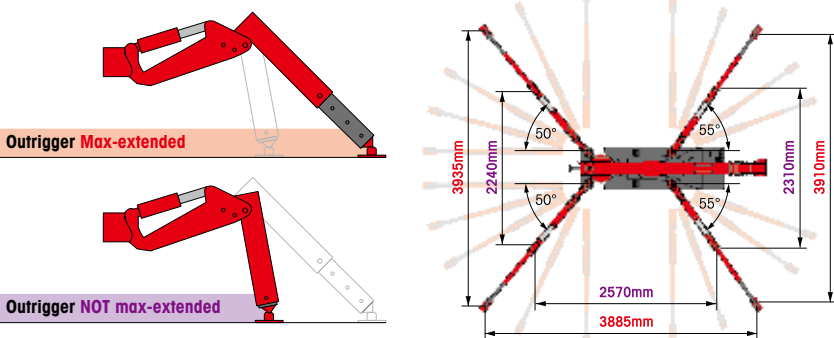
Length	500mm
Lifting capacity	Max. 300kg
Tilt angles	0°, 20°, 40°, 60°

Fly jib assembly (Option)



Length	1.5m
Lifting capacity	Max. 710kg
Tilt angles	0°, 20°, 40°, 60°

## OUTRIGGER POSITIONS

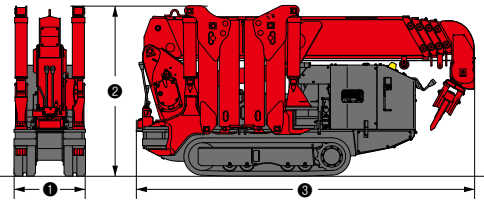


NOTE: Safe load indicator model may place each outrigger at one-angle

## CRAWLING GEAR [with Electric power unit]

Crane model	URW295CP2	URW295C4
Crawling speed	0~2.3 km/h, forward / backward [AC200V 50Hz] 0~1.2 km/h [AC200V 60Hz] 0~1.4 km/h [AC400V 50Hz] 0~1.1 km/h [AC400V 60Hz] 0~1.3 km/h	0~2 km/h, forward / backward [AC200V 50Hz] 0~1.2 km/h [AC200V 60Hz] 0~1.4 km/h [AC400V 50Hz] 0~1.1 km/h [AC400V 60Hz] 0~1.3 km/h
Hill climbing ability	20°	20°
Tread length × width	1050mm × 180mm	1050mm × 180mm
Ground contact pressure	48.0 kPa [0.49 kgf/cm <sup>2</sup> ] 51.4 kPa [0.52 kgf/cm <sup>2</sup> ]	49.8 kPa [0.51 kgf/cm <sup>2</sup> ] 53.0 kPa [0.54 kgf/cm <sup>2</sup> ]
Engine manufacturer / model	Mitsubishi / GB400LE	Kubota / Z482-E4B
Displacement	391cc	479cc
Maximum output	6.6kW(9PS) / 1800 rpm, Rated output	7.2kW(9.8PS) / 2600 rpm, Rated output
Fuel	Petrol	Diesel
Fuel tank capacity	6 liters	10 liters
Steering	Hydraulic drive independent of left / right	Hydraulic drive independent of left / right

## DIMENSIONS [with Electric power unit]



Crane model	URW295CP2	URW295C4
① Total width	600mm	
② Total height	1375mm [1430mm]	1380mm [1450mm]
③ Total length	2690mm	2730mm [2900mm]
Mass of crane	1850kg [1980kg]	1920kg [2040kg]