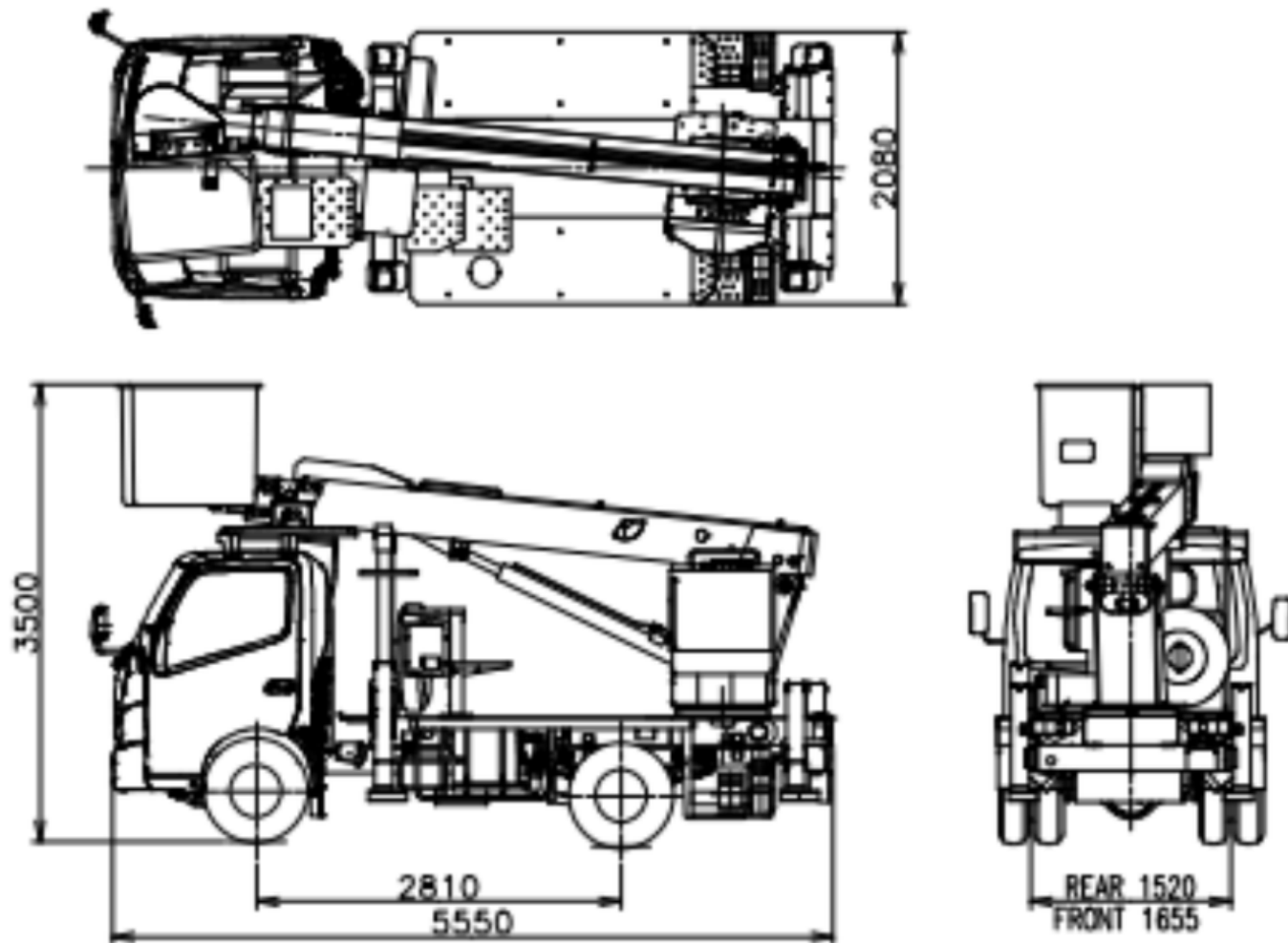
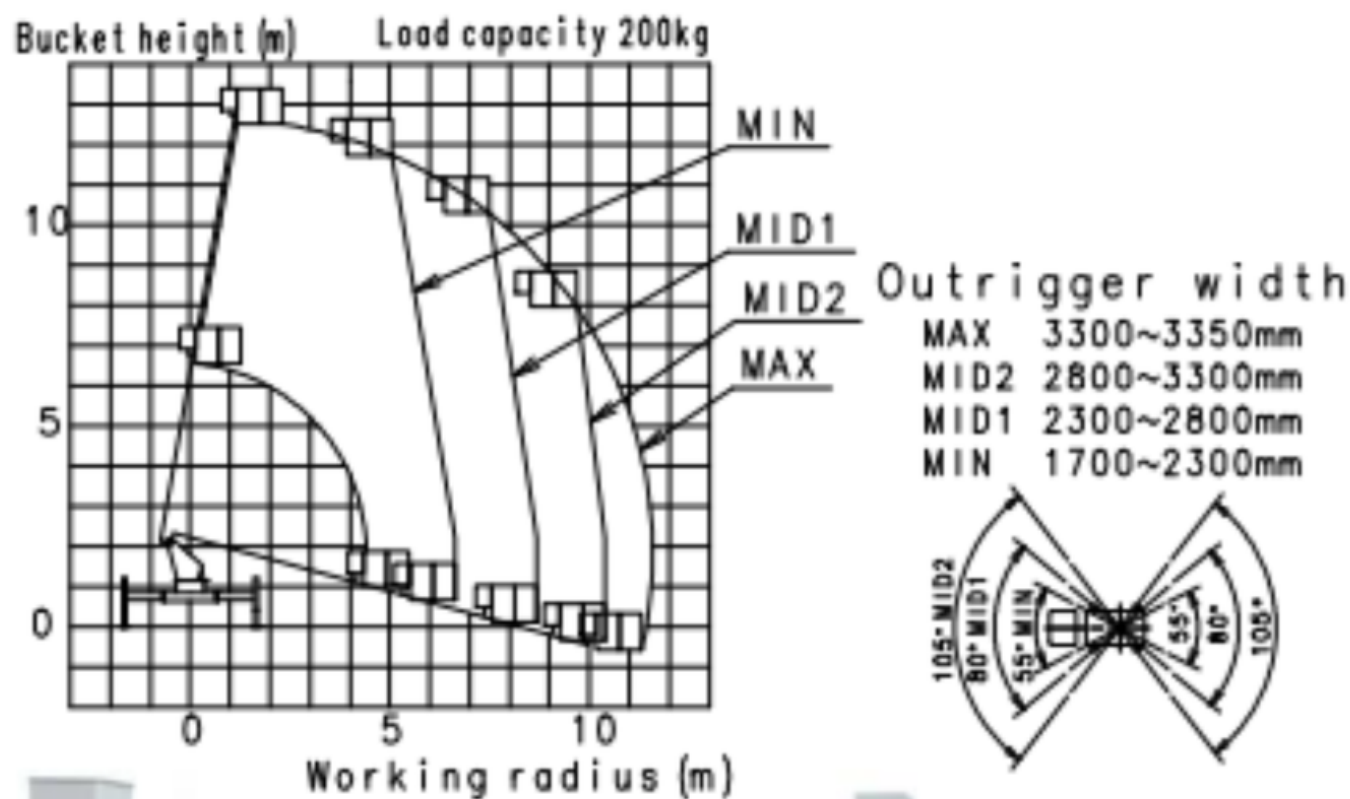


## VEHICLE DIMENSION



## WORKING RANGE DIAGRAM



- Max. Working Radius  
11.5m



## SPECIFICATION

### ● Model Number and Model Name

Model Number	SK12A
Model Name	Aerial Work Platform

### ● Bucket

Load Capacity	200kg or 2 persons
Max. Bucket Floor Height	12.5m
Max. Work Radius	11.5m
Inner Dimensions	1.0m x 0.7m x 0.9m (LxWxH)
Swing Angle	Left:100, Right:100 degrees

### ● Boom

Type	3 stages fully telescopic
Boom Length	4.71 to 10.75 m
Telescopic Stroke	6.04 m
Boom Angle	-15 to +80 degrees
Elevation Speed	30 sec / stroke
Extension/Retraction Speed	32 / 25 sec / stroke

### ● Rotation Device

Rotation Angle	360 degrees (Continuous)
Rotation Speed	1.0 rpm

### ● Outrigger

Outrigger Width	1,710 to 3,350 mm
Outrigger Stroke	820 mm
Jack Stroke	495 mm

### ● Safety Device

Hydraulic safety devices (Relief valve, Pilot check valves on Jack cylinders, Holding valves on Elevation and Extension cylinders, Bucket leveling system), AMCS(AICHI Moment Control System), Built-in cabin avoidance system, Automatic speed control for boom elevation and rotation, Jack-Boom Interlock system, Emergency stop switch, Emergency pump, Self checking for malfunction

### ● Other Device

Automatic accelerator, Starting check-up switch, Level meter, Malfunction storage unit

### ● Standard Accessories

Wooden jack base, Wheel chock