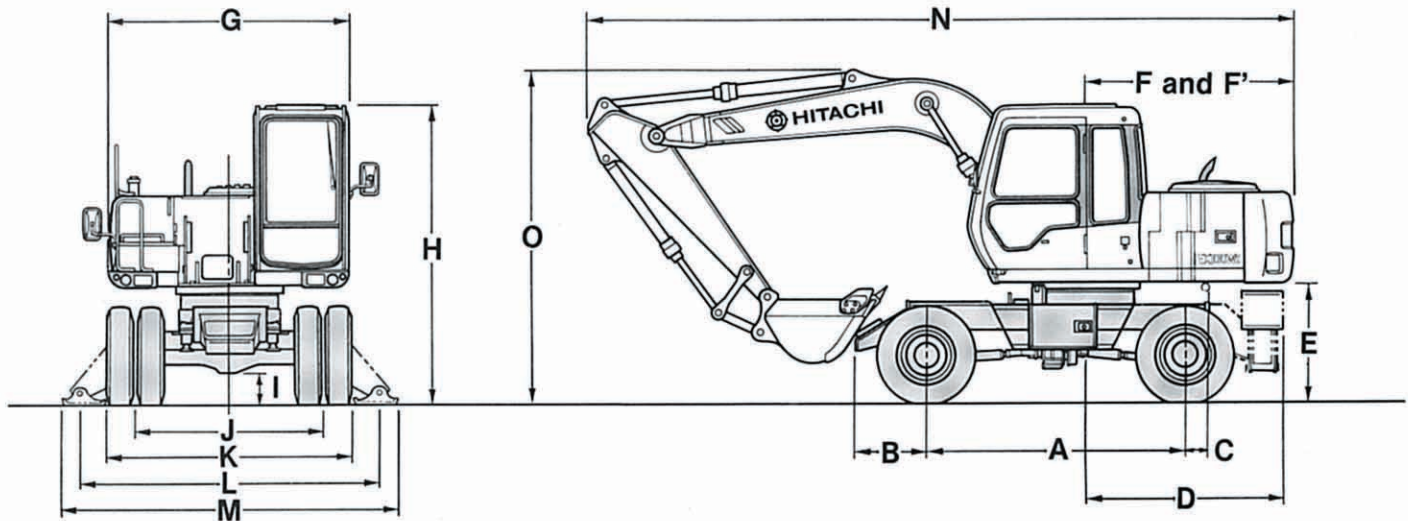


# EX100WD

- Rated engine HP..... 81 kW (110 PS)
- Operating weight..... EX100WD-2: 10 600 kg (23 400 lb)
- Backhoe bucket..... PCSA heaped: 0.19 — 0.59 m<sup>3</sup>  
(0.25 — 0.77 cu yd)  
CECE heaped: 0.17 — 0.50 m<sup>3</sup>

## Specifications



A	Wheel base	2 600 mm (8'6")	
B	Center of front axle to front end	725 mm (2'5")	
C	Center of rear axle to rear end	235 mm (9'3")	
D	Swing center to outrigger end	2 005 mm (6'7")	
E	Superstructure clearance	1 190 mm (3'11")	
F	Rear-end swing radius	2 130 mm (7'0")	
F'	Rear-end length	2 100 mm (6'11")	
G	Superstructure width	2 480 mm (8'2")	
H	Cab height	3 020 mm (9'11")	
I	Minimum ground clearance	325 mm (1'1")	
J	Tread	1 895 mm (6'3")	
K	Overall width (Undercarriage width)	2 460 mm (8'1")	
L	Center to center width of outrigger	3 170 mm (10'5")	
M	Overall width of outrigger extended	3 490 mm (11'5")	
N	Overall length	7 110 mm (23'4")	with 1.96 m (6'5") arm
		6 945 mm (22'9")	with 2.26 m (7'5") arm
O	Overall height of boom	3 400 mm (11'2")	with 1.96 m (6'5") arm
		3 610 mm (11'10")	with 2.26 m (7'5") arm

# TECHNICAL DATA

## ENGINE

Model.....	Isuzu 4BD1T
Type .....	Water-cooled, 4-cycle, 4-cyl- inders in-line, direct injection chamber type diesel engine
Rated flywheel horsepower (DIN 6271, net)	
Traveling.....	81 kW (110 PS) at 2 500 min <sup>-1</sup> (2 500 rpm)
Digging.....	57 kW (78 PS) at 1 800 min <sup>-1</sup> (1 800 rpm)
Rated flywheel horsepower (SAE J1349, net)	
Traveling.....	81 kW (109 HP) at 2 500 min <sup>-1</sup> (2 500 rpm)
Digging.....	57 kW (77 HP) at 1 800 min <sup>-1</sup> (1 800 rpm)
Maximum torque .....	314 N·m (32 kgf·m, 231 lbf·ft) at 1 800 min <sup>-1</sup> (1 800 rpm)
Piston displacement .....	3.856 l (235 cu in)
Bore and stroke .....	102 mm x 118 mm (4.02" x 4.65")
Starting system.....	24 V electric motor starting
Batteries .....	2 x 12 V, 52 AH

## HYDRAULIC SYSTEM

ELLE (Electronic Load-sensing Excavation) system designed for maximum job efficiency and precise, smooth control.

- Load-sensing system
- Flow dividing control system
- Work mode selector  
General-purpose mode / Trenching mode  
Grading mode/Precision mode

Power selector designed for maximum productivity and fuel savings.

- Engine speed sensing system  
P (Power) mode / E (Economy) mode  
L (Low speed) mode / I (Low idle) mode

Main pump .....	1-variable displacement axial piston pump
Maximum oil flow.....	1 x 178.0 l/min (47.0 US gpm, 39.2 Imp gpm)
Steering pump .....	1 gear pump
Maximum oil flow .....	18 l/min (4.8 US gpm, 4.0 Imp gpm)
Pilot pump .....	Gear pump
Maximum oil flow .....	42.0 l/min (11.1 US gpm, 9.2 Imp gpm)

### Relief Valve Settings

Implement circuit.....	34.3 MPa (350 kgf/cm <sup>2</sup> , 4 980 psi)
Swing circuit.....	34.5 MPa (350 kgf/cm <sup>2</sup> , 4 980 psi)
Travel circuit.....	35.8 MPa (365 kgf/cm <sup>2</sup> , 5 190 psi)
Outrigger circuit.....	24.5 MPa (250 kgf/cm <sup>2</sup> , 3 560 psi)
Pilot circuit.....	4.9 MPa ( 50 kgf/cm <sup>2</sup> , 710 psi)

### Hydraulic Cylinders

High-strength piston rods and tubes. Cylinder cushion mechanisms provided in all cylinders to absorb shocks at stroke ends.

## Dimensions

	Quan.	Bore	Rod diameter
Boom	2	95 mm (3.74")	70 mm (2.76")
Arm	1	105 mm (4.13")	75 mm (2.95")
Bucket	1	95 mm (3.74")	65 mm (2.56")

## Hydraulic Filters

All hydraulic circuits have high-quality hydraulic filters for protection against oil contamination and for longer life of hydraulic equipment. A suction filter is incorporated in the suction line, and 10µm full-flow filters in the return line and swing/travel motor drain lines.

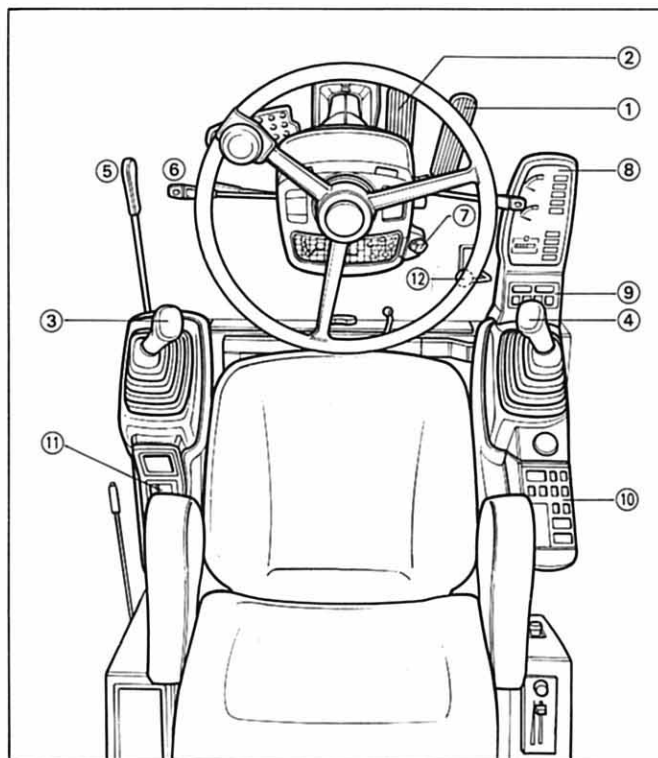
## CONTROLS

### 2 Implement Levers

Pilot controls (for all operations), Hitachi's original shockless valve and quick warm-up system are built in the pilot circuit for easy, precise, fatigue-free operation. Hydraulic warm-up control system for engine and hydraulic oil. Multi selection lever with rotary valve is optionally available for simple selection of control lever direction.

### Steering Wheel

Use of the two steering cylinders equalizes clockwise and counterclockwise steering angles per turns of the steering wheel.



- |   |                     |
|---|---------------------|
| ① Accelerator pedal                                       | ⑧ Monitor panel     |
| ② Service brake pedal                                     | ⑨ Switch Panel I    |
| ③ Swing/Arm control lever                                 | ⑩ Switch Panel II   |
| ④ Boom/ Bucket control lever                              | ⑪ Auto tuning radio |
| ⑤ Pilot control shut-off lever                            | ⑫ Swing lock lever  |
| ⑥ Travel mode selection lever                             |                     |
| ⑦ Travel/parking brake/digging brake<br>selection switch. |                     |



## SUPERSTRUCTURE

### Revolving Frame

Welded high-strength box construction using heavy-gauge steel plates for high ruggedness. Reinforced D-section frame featuring high resistance to deformation.

### Swing Mechanism

High-torque, axial piston motor with planetary reduction gear is bathed in oil. Swing circle is single-row, shear-type ball bearing with induction-hardened internal gear. Internal gear and pinion gear are immersed in lubricant. Swing parking brake is spring-set/hydraulic-released disc type. Swing dampener valve in the swing circuit prevents coasting when stopping swing. Swing cushion valve built in swing motor absorbs shocks when stopping swing, ensuring smooth stops.

Swing speed..... 11.0 min<sup>-1</sup> (11.0 rpm)

### Operator's Cab

Independent roomy cab, 940 mm (37") wide by 1 620 mm (64") high, conforming to ISO\* Standards. Reinforced glass windows on all 4 sides for all-round visibility. Front windows (upper and lower), fully openable, are spring-assisted for easy storing in the cab and for absorbing shocks during lowering. Fully adjustable, suspension seat with armrests; movable with or without control levers and monitor panel.

\* International Standard Organization



## UNDERCARRIAGE

Wheeled-type undercarriage. The frame is of all-welded, stress-relieved structure. Top-grade materials used for toughness.

Drive system ..... 4 × 4 (4 wheel drive)

Travel motor..... Variable displacement axial piston motor with brake valve to prevent over-running when traveling down hill.

Transmission..... Constant mesh type for high and low speed range.

Travel speed

Low speed range..... 0 to 12.7 km/h (7.9 mph), forward and reverse

High speed range ..... 0 to 34.5 km/h (21.4 mph), forward and reverse

Max. traction force..... 60.3 kN (6 150 kgf, 13 600 lbf)

Gradeability ..... 33° (65%)

### Steering System

Hydraulically actuated, orbit-roll-type steering system actuates on front wheels through the steering cylinders. 2 steering cylinders

Bore..... 60 mm (2.4")

Rod diameter..... 25 mm (1")

Min. turning radius ..... 6 500 mm (21'4")

### Brakes

Service brake ..... Air-over Hydraulic brakes acting at each wheel-internal-expanding shoe type. Brake lines are independent to front wheels and rear wheels

Parking brake ..... Spring actuated, air-released, internal-expanding shoe type, acting on horizontal drive shaft.

Digging brake..... Acting at all wheels, horizontal drive shaft and also locks oscillation cylinders for digging operation

### Axles

Full-floating front axle is center-pin supported for oscillation. It can be locked by oscillation cylinders.

Full-floating rear axle is fixed on the chassis.

### Tires

Traction-type tread pattern for offroad use—rough terrain, swampy or sandy ground—generating high traction force with less slippage.

Standard ..... 9.00 - 20 - 12 PR × 8

Option (Heavy-duty traction-type tread pattern) ..... 9.00 - 20 - 12 PR × 8

### Outriggers (Option)

Each outrigger cylinder is fitted with pilot-operated check valves, thus permitting positive locking of outrigger.



## SERVICE REFILL CAPACITIES

	Liters	US gal	Imp gal
Fuel tank.....	250	66.1	55.0
Engine coolant.....	18.4	4.9	4.0
Engine oil.....	14.7	3.9	3.2
Swing device.....	4.0	1.1	0.9
Transmission.....	3.5	0.9	0.8
Differential gear box..... (front/rear)	6.0/8.0	1.6/2.1	1.3/1.8
Hub reduction gear			
front axle.....	2 × 1.5	2 × 0.4	2 × 0.33
rear axle.....	2 × 1.5	2 × 0.4	2 × 0.33
Hydraulic system.....	132	34.9	29.0
Hydraulic tank.....	69	18.2	15.2



# TECHNICAL DATA



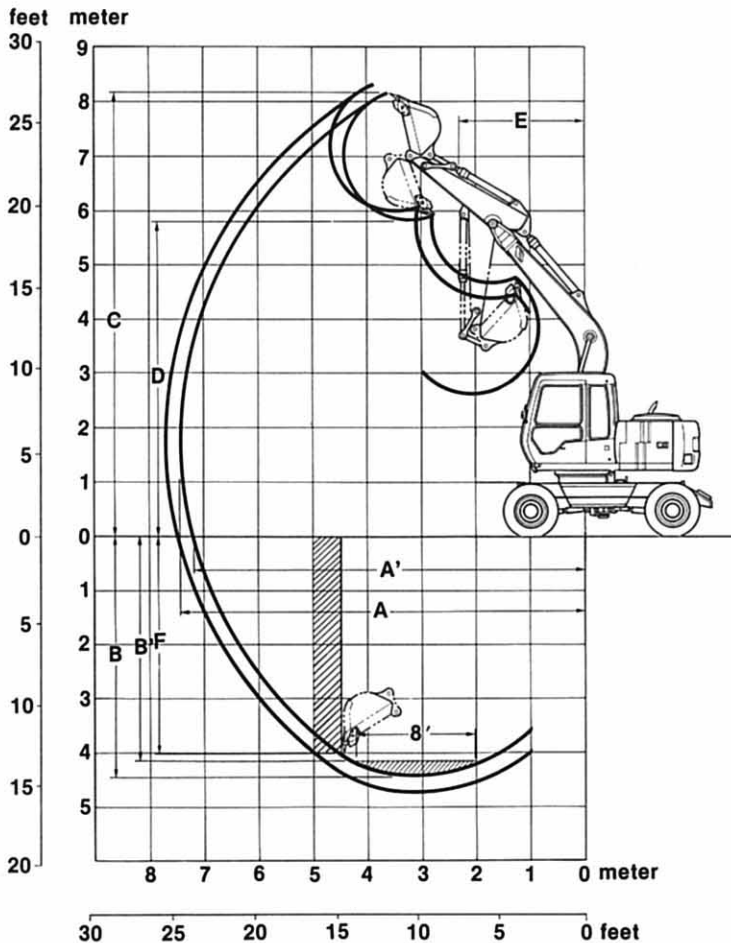
## BACKHOE ATTACHMENTS

Boom and arms are of all-welded, low-stress, full box-section design. 4.27 m (14'0") boom, and 1.96 m (6'5"), 2.26 m (7'5") arms are available.

Bucket is of all-welded, high-strength steel structure. Side clearance adjust mechanism provided on the bucket joint bracket.



## WORKING RANGES



Arm length	1.96 m (6'5")	2.26 m (7'5")
A Max. digging reach	7 430 mm (24'5")	7 720 mm (25'3")
A' Max. digging reach (on ground)	7 210 mm (23'7")	7 500 mm (24'7")
B Max. digging depth	4 460 mm (14'8")	4 760 mm (15'7")
B' Max. digging depth (8' level)	4 200 mm (13'9")	4 530 mm (14'10")
C Max. cutting height	8 160 mm (26'9")	8 330 mm (27'4")
D Max. dumping height	5 770 mm (18'11")	5 930 mm (19'5")
E Min. swing radius	2 370 mm (7'9")	2 400 mm (7'10")
F Max. vertical wall	4 000 mm (13'1")	4 300 mm (14'1")
Bucket digging force	78.5 kN (8 000 kgf, 17 600 lbf)	78.5 kN (8 000 kgf, 17 600 lbf)
Arm crowd force	57.9 kN (5 900 kgf, 13 000 lbf)	53.0 kN (5 400 kgf, 11 900 lbf)

## Buckets

Capacity		Width		No. of teeth	Weight	Recommendation	
PCSA heaped	CECE heaped	Without side cutters	With side cutters			1.96 m (6'5") arm	2.26 m (7'5") arm
0.19 m <sup>3</sup> (0.25 cu yd)	0.17 m <sup>3</sup>	450 mm (18")	550 mm (22")	3	240 kg ( 530 lb)	⊙	⊙
0.30 m <sup>3</sup> (0.39 cu yd)	0.25 m <sup>3</sup>	580 mm (23")	700 mm (28")	3	280 kg ( 620 lb)	⊙	⊙
0.40 m <sup>3</sup> (0.52 cu yd)	0.33 m <sup>3</sup>	680 mm (27")	800 mm (31")	4	320 kg ( 710 lb)	⊙	⊙
0.46 m <sup>3</sup> (0.60 cu yd)	0.40 m <sup>3</sup>	850 mm (33")	970 mm (38")	5	370 kg ( 820 lb)	⊙	⊙
0.55 m <sup>3</sup> (0.72 cu yd)	0.45 m <sup>3</sup>	890 mm (35")	1 010 mm (40")	5	390 kg ( 860 lb)	⊙	○
0.59 m <sup>3</sup> (0.77 cu yd)	0.50 m <sup>3</sup>	950 mm (37")	1 070 mm (42")	5	410 kg ( 900 lb)	○	□
V-shaped bucket : 0.35 m <sup>3</sup> (0.46 cu yd: CECE heaped)				3	320 kg ( 710 lb)	○	○
Clamshell bucket : 0.30 m <sup>3</sup> (0.39 cu yd: CECE heaped), Width 560 mm (22")				6	690 kg (1 520 lb)	⊙	⊙
Slope-finishing blade: Width 1 000 mm (39"), Length 1 600 mm (63")					475 kg (1 050 lb)	◇	◇

- ⊙ Suitable for materials with density of 2 000 kg/m<sup>3</sup> (3 370 lb/cu yd) or less  
 ○ Suitable for materials with density of 1 600 kg/m<sup>3</sup> (2 700 lb/cu yd) or less  
 □ Suitable for materials with density of 1 100 kg/m<sup>3</sup> (1 850 lb/cu yd) or less  
 ◇ Slope-finishing service  
 — Not recommended



## STANDARD EQUIPMENT

Standard equipment may vary by country, so please consult your Hitachi dealer for details.

### Cab

All-weather sound-suppressed steel cab equipped with reinforced, tinted (bronze color) glass windows, openable front windows — upper with assist spring, and lower and both side windows with intermittent windshield wipers, front window washer, adjustable suspension seat with armrests, electric double horn, auto-tuning radio with digital clock, auto-idle switch, cigarette lighter, ashtray, parcel pocket, rear tray, floor mat, heater, and pilot control shut-off lever.

### Monitor System

- Meters  
Tachometer, hourmeter, engine coolant temperature gauge, air pressure gauge, fuel meter.
- Warning lamps  
Alternator charge, engine oil pressure, engine overheat, engine oil filter clog, air cleaner clog, minimum fuel lever, air pressure.
- Pilot lamps  
Working light, engine oil level, engine coolant level, hydraulic oil level, engine pre-heat, turn signal, head light high beam, parking brake, digging brake, oscillation cylinder lock, hazard warning signal.
- Alarm buzzers  
Engine oil pressure, engine overheat, air pressure.
- Swing lock for travel and transportation

### Lights

- 3 working lights, and 1 cab light.

### Superstructure

Full undercover for noise suppression, 1 700 kg (3 750 lb) counterweight, large tool box, utility space, rearview mirror, cartridge-type filters for engine oil and fuel, heavy-duty air cleaner with evacuator valve, radiator and oil cooler with dust-proof net, radiator reserve tank, boom-arm holding valve, hydraulic warm-up control system for engine and hydraulic oil, quick warm-up system for pilot circuit, accumulator for pilot circuit, control valve with main relief valve, hydraulic brake valves for travel circuits, swing and travel parking brakes.

### Lights and Signals

2 headlights (single-type). 1 working light. Combination lamps (turn signal lamps, parking lamps, brake lamps, marker lamps, back lamps and hazard warning signal lamps).

### Miscellaneous

Standard tool kit, lockable machine covers, fuel filling cap, non-slip tapes, and handrails.



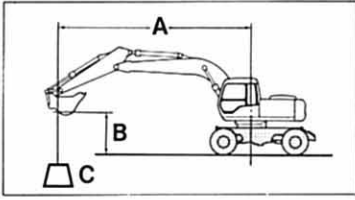
## OPTIONAL EQUIPMENT

Optional equipment may vary by country, so please consult your Hitachi dealer for details.

- Air conditioner
- Fenders for tires
- Rear outrigger
- Rear dozer blade [width; 2 470 mm (8'1"), height; 580 mm (1'11")]
- 2.26 m (7'5") arm
- Multi selection lever with rotary valve
- Hose rupture valves
- Electric fuel refilling pump
- Swing motion alarm device with lamps
- Travel motion alarm device
- Additional pump
- Piping kit for extra port
- PTO valve & Additional valve with piping kit
- V-shaped bucket for water-ways and drainage.
- Clamshell bucket for deep, vertical excavations like manholes, pilings, footings, etc.
- Slope-finishing blade for slope finishing jobs . . . scraping up or down, compacting, leveling, grading etc.

# LIFTING CAPACITIES

**METRIC MEASURE**



**A: Load radius**  
**B: Load point height**  
**C: Lifting capacity**

Rating over-side or 360 degrees Rating over-rear

**EX100WD-2 (Not equipped with rear outriggers)**

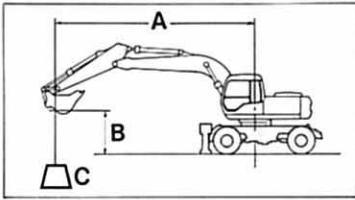
Unit: 1 000 kg (1 000 lb)

Conditions	Load point height m (ft in)	Load radius										m (ft in)								
		2 (6'7")		3 (9'10")		4 (13'1")		5 (16'5")		6 (19'8")		7 (23'0")		At max. reach						
Boom 4.27 m (14'0") Arm 1.96 m (6'5") Bucket PCSA: 0.46 m <sup>3</sup> (0.60 cu yd) CECE: 0.40 m <sup>3</sup> Tires 9.00-20-12PR, duals	6 (19'8")					*2.48 (5.47)	*2.48 (5.47)									*1.19 (2.62)	*1.19 (2.62)	5.41 (17'9")		
	5 (16'5")					*2.51 (5.53)	*2.51 (5.53)	1.78 (3.92)	2.15 (4.74)									*1.11 (2.45)	*1.11 (2.45)	6.19 (20'4")
	4 (13'1")			*3.34 (7.36)	*3.34 (7.36)	2.58 (5.69)	*2.88 (6.35)	1.75 (3.86)	2.11 (4.65)									*1.09 (2.40)	*1.09 (2.40)	6.69 (21'11")
	3 (9'10")			3.88 (8.56)	*4.60 (10.14)	2.44 (5.38)	2.94 (6.48)	1.68 (3.70)	2.04 (4.50)	1.20 (2.65)	1.48 (3.26)					0.98 (2.16)	*1.10 (2.43)	6.98 (22'11")		
	2 (6'7")			3.56 (7.85)	4.35 (9.59)	2.29 (5.05)	2.79 (6.15)	1.60 (3.53)	1.97 (4.34)	1.16 (2.56)	1.45 (3.20)					0.93 (2.05)	*1.14 (2.50)	7.10 (23'4")		
	1 (3'3")			3.41 (7.52)	4.19 (9.24)	2.18 (4.81)	2.68 (5.91)	1.54 (3.40)	1.90 (4.19)	1.13 (2.49)	1.42 (3.13)					0.92 (2.03)	1.15 (2.54)	7.04 (23'1")		
	0 (Ground)			3.36 (7.41)	4.14 (9.13)	2.12 (4.67)	2.62 (5.78)	1.50 (3.31)	1.86 (4.10)									0.96 (2.12)	1.20 (2.65)	6.82 (22'5")
	-1 (-3'3")	*4.96 (10.94)	*4.96 (10.94)	3.36 (7.41)	4.13 (9.11)	2.11 (4.65)	2.60 (5.73)	1.49 (3.29)	1.85 (4.08)									1.07 (2.36)	1.33 (2.93)	6.40 (21'0")
	-2 (-6'7")	7.22 (15.92)	*8.14 (17.95)	3.40 (7.50)	4.18 (9.22)	2.14 (4.72)	2.63 (5.80)											1.30 (2.87)	1.60 (3.53)	5.74 (18'10")
	-3 (-9'10")			3.50 (7.72)	4.30 (9.48)															

Boom 4.27 m (14'0") Arm 2.26 m (7'5") Bucket PCSA: 0.46 m <sup>3</sup> (0.60 cu yd) CECE: 0.40 m <sup>3</sup> Tires 9.00-20-12PR, duals	6 (19'8")					*2.50 (5.51)	*2.50 (5.51)									*1.09 (2.40)	*1.09 (2.40)	5.75 (18'10")		
	5 (16'5")					*2.57 (5.67)	*2.57 (5.67)	1.79 (3.95)	2.16 (4.76)									*1.02 (2.25)	*1.02 (2.25)	6.49 (21'4")
	4 (13'1")					2.61 (5.76)	*2.96 (6.53)	1.75 (3.86)	2.12 (4.67)	1.22 (2.69)	1.51 (3.33)					*0.99 (2.18)	*0.99 (2.18)	6.97 (22'10")		
	3 (9'10")			3.96 (8.73)	*4.60 (10.14)	2.50 (5.51)	2.96 (6.53)	1.86 (3.70)	2.04 (4.50)	1.19 (2.62)	1.48 (3.26)					0.89 (1.96)	*1.00 (2.21)	7.25 (23'9")		
	2 (6'7")			3.61 (7.96)	4.39 (9.68)	2.30 (5.07)	2.80 (6.17)	1.59 (3.51)	1.96 (4.32)	1.15 (2.54)	1.44 (3.18)					0.84 (1.85)	*1.03 (2.27)	7.37 (24'2")		
	1 (3'3")			3.39 (7.47)	4.17 (9.19)	2.17 (4.78)	2.67 (5.89)	1.51 (3.33)	1.88 (4.15)	1.11 (2.45)	1.40 (3.09)					0.83 (1.83)	1.06 (2.34)	7.32 (24'0")		
	0 (Ground)			3.31 (7.30)	4.08 (9.00)	2.09 (4.61)	2.59 (5.71)	1.47 (3.24)	1.83 (4.04)	1.08 (2.38)	1.37 (3.02)					0.86 (1.90)	1.09 (2.40)	7.12 (23'4")		
	-1 (-3'3")	*4.92 (10.85)	*4.92 (10.85)	3.29 (7.25)	4.07 (8.97)	2.06 (4.54)	2.56 (5.64)	1.45 (3.20)	1.81 (4.00)									0.95 (2.09)	1.20 (2.65)	6.73 (22'1")
	-2 (-6'7")	7.07 (15.60)	*7.71 (17.00)	3.32 (7.32)	4.10 (9.04)	2.08 (4.59)	2.58 (5.69)	1.47 (3.24)	1.83 (4.04)									1.13 (2.47)	1.41 (3.11)	6.12 (20'1")
	-3 (-9'10")	*6.65 (14.66)	*6.65 (14.66)	3.42 (7.54)	4.20 (9.26)	2.16 (4.76)	2.66 (5.87)											1.52 (3.35)	1.86 (4.10)	5.20 (17'1")
	-4 (-13'1")																			

- Notes: 1. Ratings are based on SAE J1097.  
 2. Lifting capacity of the Super EX Series does not exceed 75% of tipping load with the machine on firm, level ground or 87% of full hydraulic capacity.  
 3. The load point is a hook (not standard equipment) loaded on the back of the bucket.  
 4. \*Indicates load limited by hydraulic capacity.

**METRIC MEASURE**



**A: Load radius**  
**B: Load point height**  
**C: Lifting capacity**

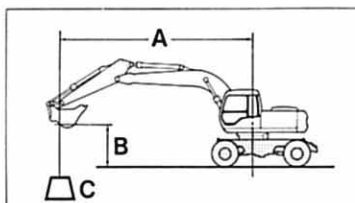
Rating over-side or 360 degrees Rating over-rear

**EX100WD-2 (With rear outriggers on ground)**

Unit: 1 000 kg (1 000 lb)

Conditions	Load point height m (ft in)	Load radius												At max. reach			
		2 (6'7")		3 (9'10")		4 (13'1")		5 (16'5")		6 (19'8")		7 (23'0")				m @ (ft in)	
Boom 4.27 m (14'0") Arm 1.96 m (6'5") Bucket PCSA: 0.46 m <sup>3</sup> (0.60 cu yd) CECE: 0.40 m <sup>3</sup> Tires 9.00-20-12PR, duals	6 (19'8")					*2.48 (5.47)	*2.48 (5.47)							*1.19 (2.62)	*1.19 (2.62)	5.41 (17'9")	
	5 (16'5")					*2.51 (5.53)	*2.51 (5.53)	*2.49 (5.49)	*2.49 (5.49)					*1.11 (2.45)	*1.11 (2.45)	6.19 (20'4")	
	4 (13'1")			*3.34 (7.36)	*3.34 (7.36)	*2.88 (6.35)	*2.88 (6.35)	*2.67 (5.89)	*2.67 (5.89)					*1.09 (2.40)	*1.09 (2.40)	6.69 (21'11")	
	3 (9'10")			*4.60 (10.14)	*4.60 (10.14)	*3.46 (7.63)	*3.46 (7.63)	2.59 (5.71)	*2.95 (6.50)	1.89 (4.17)	*1.99 (4.39)			*1.10 (2.43)	*1.10 (2.43)	6.98 (22'11")	
	2 (6'7")			5.81 (12.81)	*5.86 (12.92)	3.60 (7.94)	*4.09 (9.02)	2.51 (5.53)	*3.28 (7.23)	1.86 (4.10)	*2.68 (5.91)			*1.14 (2.51)	*1.14 (2.51)	7.10 (23'4")	
	1 (3'3")			*5.48 (12.08)	*5.48 (12.08)	3.48 (7.67)	*4.56 (10.05)	2.44 (5.38)	*3.56 (7.85)	1.82 (4.01)	*2.72 (6.00)			*1.21 (2.67)	*1.21 (2.67)	7.04 (23'1")	
	0 (Ground)			5.57 (12.28)	*6.67 (14.71)	3.41 (7.52)	*4.79 (10.56)	2.40 (5.29)	*3.72 (8.20)					*1.33 (2.93)	*1.33 (2.93)	6.82 (22'5")	
	-1 (-3'3")	*4.96 (10.94)	*4.96 (10.94)	5.57 (12.28)	*6.43 (14.18)	3.40 (7.50)	*4.75 (10.47)	2.39 (5.27)	*3.65 (8.05)					*1.52 (3.35)	*1.52 (3.35)	6.40 (21'0")	
	-2 (-6'7")	*8.14 (17.95)	*8.14 (17.95)	5.62 (12.39)	*5.81 (12.81)	3.43 (7.56)	*4.33 (9.55)							*1.85 (4.08)	*1.85 (4.08)	5.74 (18'10")	
	-3 (-9'10")			*4.53 (9.99)	*4.53 (9.99)									*4.53 (9.99)	*4.53 (9.99)	3.00 (9'10")	
		6 (19'8")					*2.50 (5.51)	*2.50 (5.51)							*1.09 (2.40)	*1.09 (2.40)	5.75 (18'10")
		5 (16'5")					*2.57 (5.67)	*2.57 (5.67)	*2.59 (5.71)	*2.59 (5.71)					*1.02 (2.25)	*1.02 (2.25)	6.49 (21'4")
		4 (13'1")					*2.96 (6.53)	*2.96 (6.53)	2.68 (5.91)	*2.74 (6.04)	*1.70 (3.75)	*1.70 (3.75)			*0.99 (2.19)	*0.99 (2.19)	6.97 (22'10")
	3 (9'10")			*4.60 (10.14)	*4.60 (10.14)	*3.55 (7.83)	*3.55 (7.83)	2.60 (5.73)	*3.04 (6.70)	1.89 (4.17)	*2.63 (5.80)			*1.00 (2.21)	*1.00 (2.21)	7.25 (23'9")	
	2 (6'7")			5.87 (12.94)	*5.91 (13.03)	3.61 (7.96)	*4.20 (9.26)	2.51 (5.53)	*3.38 (7.45)	1.84 (4.06)	*2.93 (6.46)			*1.03 (2.27)	*1.03 (2.27)	7.37 (24'2")	
	1 (3'3")			5.62 (12.39)	*6.70 (14.77)	3.47 (7.65)	*4.71 (10.39)	2.43 (5.36)	*3.68 (8.11)	1.80 (3.97)	*3.07 (6.77)			*1.10 (2.43)	*1.10 (2.43)	7.32 (24'0")	
	0 (Ground)			5.52 (12.17)	*6.90 (15.21)	3.38 (7.45)	*4.95 (10.91)	2.37 (5.23)	*3.84 (8.47)	1.78 (3.92)	*3.10 (6.84)			*1.21 (2.67)	*1.21 (2.67)	7.12 (23'4")	
	-1 (-3'3")	*4.92 (10.85)	*4.92 (10.85)	5.50 (12.13)	*6.66 (14.69)	3.35 (7.39)	*4.91 (10.83)	2.35 (5.18)	*3.79 (8.36)					*1.38 (3.04)	*1.38 (3.04)	6.73 (22'1")	
	-2 (-6'7")	*7.71 (17.00)	*7.71 (17.00)	5.54 (12.22)	*6.03 (13.30)	3.37 (7.43)	*4.51 (9.94)	2.37 (5.23)	*3.37 (7.43)					*1.65 (3.64)	*1.65 (3.64)	6.12 (20'1")	
	-3 (-9'10")	*6.65 (14.66)	*6.65 (14.66)	*4.85 (10.69)	*4.85 (10.69)	3.40 (7.63)	*3.50 (7.72)							*2.18 (4.81)	*2.18 (4.81)	5.20 (17'1")	
	-4 (-13'1")																

- Notes: 1. Ratings are based on SAE J1097.  
 2. Lifting capacity of the Super EX Series does not exceed 75% of tipping load with the machine on firm, level ground or 87% of full hydraulic capacity.  
 3. The load point is a hook (not standard equipment) loaded on the back of the bucket.  
 4. \*Indicates load limited by hydraulic capacity.



A: Load radius  
B: Load point height  
C: Lifting capacity

Rating over-side or 360 degrees Rating over-rear

Unit: 1 000 lb

### EX100WD-2 (Not equipped with rear outriggers)

Conditions	Load point height ft in	Load radius												At max. reach							
		5'0"				10'0"				15'0"				20'0"				ft in			
																		@ft in			
Boom 14'0" Arm 6'5" Bucket PCSA: 0.60 cu yd Tires 9.00-20-12PR, duals	15'0"					4.61	5.53												*2.59	*2.59	21'0"
	10'0"			8.41	10.11	4.33	5.25												2.18	*2.58	22'8"
	5'0"			7.49	9.17	4.01	4.92	2.46	3.08										2.02	2.53	23'3"
	0 (Ground)			7.24	8.91	3.81	4.72												2.11	2.65	22'4"
	-5'0"	*12.64	*12.64	7.26	8.93	3.80	4.71												2.55	3.17	20'1"
	-10'0"			7.59	9.24														4.04	4.92	15'5"
Boom 14'0" Arm 7'5" Bucket PCSA: 0.60 cu yd Tires 9.00-20-12PR, duals	15'0"					4.64	5.56												*2.21	*2.21	22'0"
	10'0"			8.54	*9.83	4.34	5.25	2.54	3.17										1.98	*2.20	23'8"
	5'0"			7.49	9.17	3.97	4.88	2.42	3.04										1.83	2.32	24'2"
	0 (Ground)			7.10	8.77	3.73	4.64	2.33	2.95										1.90	2.41	23'4"
	-5'0"	*11.41	*11.41	7.08	8.75	3.69	4.59												2.26	2.85	21'1"
	-10'0"			7.37	9.04														3.41	4.19	16'9"

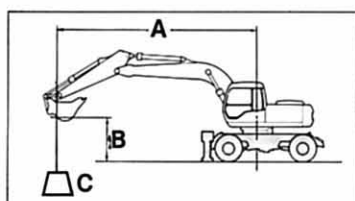
- Notes:
1. Ratings are based on SAE J1097.
  2. Lifting capacity of the Super EX Series does not exceed 75% of tipping load with the machine on firm, level ground or 87% of full hydraulic capacity.
  3. The load point is a hook (not standard equipment) loaded on the back of the bucket.
  4. \*Indicates load limited by hydraulic capacity.



# LIFTING CAPACITIES

# SuperEX

ENGLISH MEASURE



A: Load radius  
B: Load point height  
C: Lifting capacity

Rating over-side or 360 degrees Rating over-rear

## EX100WD-2 (With rear outriggers on ground)

Unit: 1 000 lb

Conditions	Load point height ft in	Load radius												At max. reach						
		5'0"				10'0"				15'0"				20'0"				ft in		@ft in
Boom 14'0" Arm 6'5" Bucket PCSA: 0.60 cu yd Tires 9.00-20-12PR, duals	15'0"					*6.38	*6.38									*2.59	*2.59	21'0"		
	10'0"			*10.83	*10.83	6.66	*7.52									*2.58	*2.58	22'8"		
	5'0"			12.26	*14.45	6.31	*8.88	3.96	*5.76							*2.74	*2.74	23'3"		
	0 (Ground)			11.97	*15.02	6.10	*9.52									*3.11	*3.11	22'4"		
	-5'0"	*12.64	*12.64	11.99	*13.50	6.09	*8.80									*3.87	*3.87	20'1"		
	-10'0"			*9.24	*9.24											*5.42	*5.42	15'5"		
Boom 14'0" Arm 7'5" Bucket PCSA: 0.60 cu yd Tires 9.00-20-12PR, duals	15'0"					*5.84	*5.84								*2.21	*2.21	22'0"			
	10'0"			*9.83	*9.83	6.68	*7.05	4.05	*5.21						*2.20	*2.20	23'8"			
	5'0"			12.28	*13.75	6.28	*8.52	3.91	5.82						*2.34	*2.34	24'1"			
	0 (Ground)			11.83	*14.93	6.02	9.18	3.82	5.72						*2.66	*2.66	23'3"			
	-5'0"	*11.41	*11.41	11.80	*13.86	5.97	*8.98								*3.31	*3.31	21'1"			
	-10'0"			*10.36	*10.36											*4.91	*4.91	16'9"		

Notes: 1. Ratings are based on SAE J1097.

2. Lifting capacity of the Super EX Series does not exceed 75% of tipping load with the machine on firm, level ground or 87% of full hydraulic capacity.

3. The load point is a hook (not standard equipment) loaded on the back of the bucket.

4. \*Indicates load limited by hydraulic capacity.



**EX100WD**

These specifications are subject to change without notice.

**Hitachi Construction Machinery Co.,Ltd.**

Head Office: Nippon Bldg. 6-2, 2-chome, Ohtemachi,  
Chiyoda-ku, Tokyo 100 Japan

Telephone: Tokyo (03) 3245-6361

Facsimile: Tokyo (03) 3246-2606

Telex: J32539 HITACONJ

Cable Address: "TOKHITACHIKENKI"