





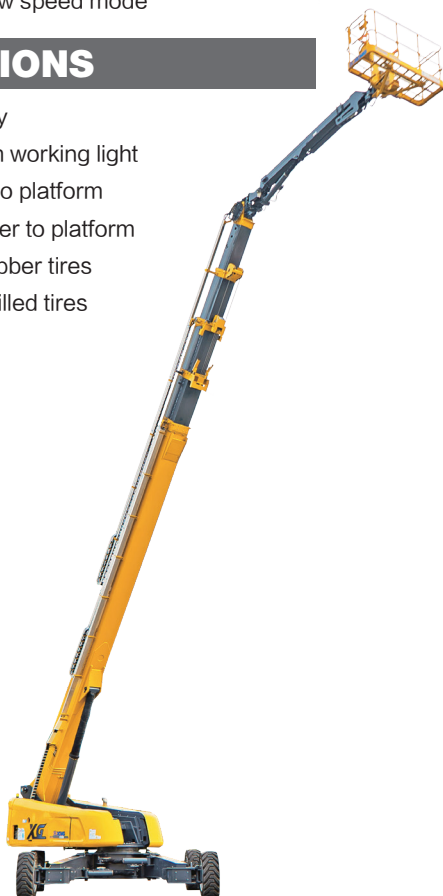
# XGS58

## FEATURES

- 2.4m × 0.9m working platform
- 12V DC auxiliary power
- Engine condition monitoring and starting protection device
- 4WD, 4WS
- X-type outriggers
- Axle balance system
- Emergency power unit
- Automatic platform leveling system
- 360° turntable rotation
- Remote information processing reserved port
- Active defense protection system
- Hydraulic oil cooler
- Anti-bad environmental protection components
- Thumb rocker steering
- Platform automatic leveling system
- Platform rotation
- Fully proportional Multifunction controls
- Drive enable
- Hourmeter screen
- Tilt alarm
- High/Low speed mode

## OPTIONS

- Tool tray
- Platform working light
- Air line to platform
- AC power to platform
- Solid rubber tires
- Foam-filled tires



## PARAMETER

Item	Unit	XGS58
<b>Dimension</b>		
a Overall length (stowed size)	mm	19450
Overall length (transportation size)	mm	14600
b Overall width	mm	2490(Axle retracted)/5030(Axle extended)
c Overall height	mm	3070
Platform dimension	mm	2400 × 900 × 1150
d Wheel base	mm	5220(Axle retracted)/4590(Axle extended)
Max. working height	mm	58600
Max. height of platform	mm	56600
Max. working radius	mm	24400
<b>Performance</b>		
Max. working load	kg	230(Unrestricted)/450(Restricted)
Max. travel speed (stowed)	km/h	4.5
Min. travel speed (elevated)	km/h	0.3~0.5
Boom luffing range	°	0~80/~45~75
Turntable rotation angle	°	360 continuous
Tailswing	mm	2320
Platform rotation angle	°	160
Min. turning radius (outside)	mm	9500(Axle retracted)/6600(Axle extended)
Min. turning radius (inside)	mm	7600(Axle retracted)/2800(Axle extended)
Total weight	kg	27900
Max. gradeability (counterweight uphill)	%	45
Max. gradeability (counterweight downhill)	%	30
<b>Power source</b>		
Engine model	/	Duetz TD 3.6 L4
Engine rated power	kW	74.4
Hydraulic tank capacity	L	250
Fuel tank capacity	L	430
Hydraulic system capacity	L	200

Work Curve Graph

