

徐工徐工 助您成功
XCMG FOR YOUR SUCCESS

XE370D

Hydraulic Excavator

Operation weight: 36,800kg

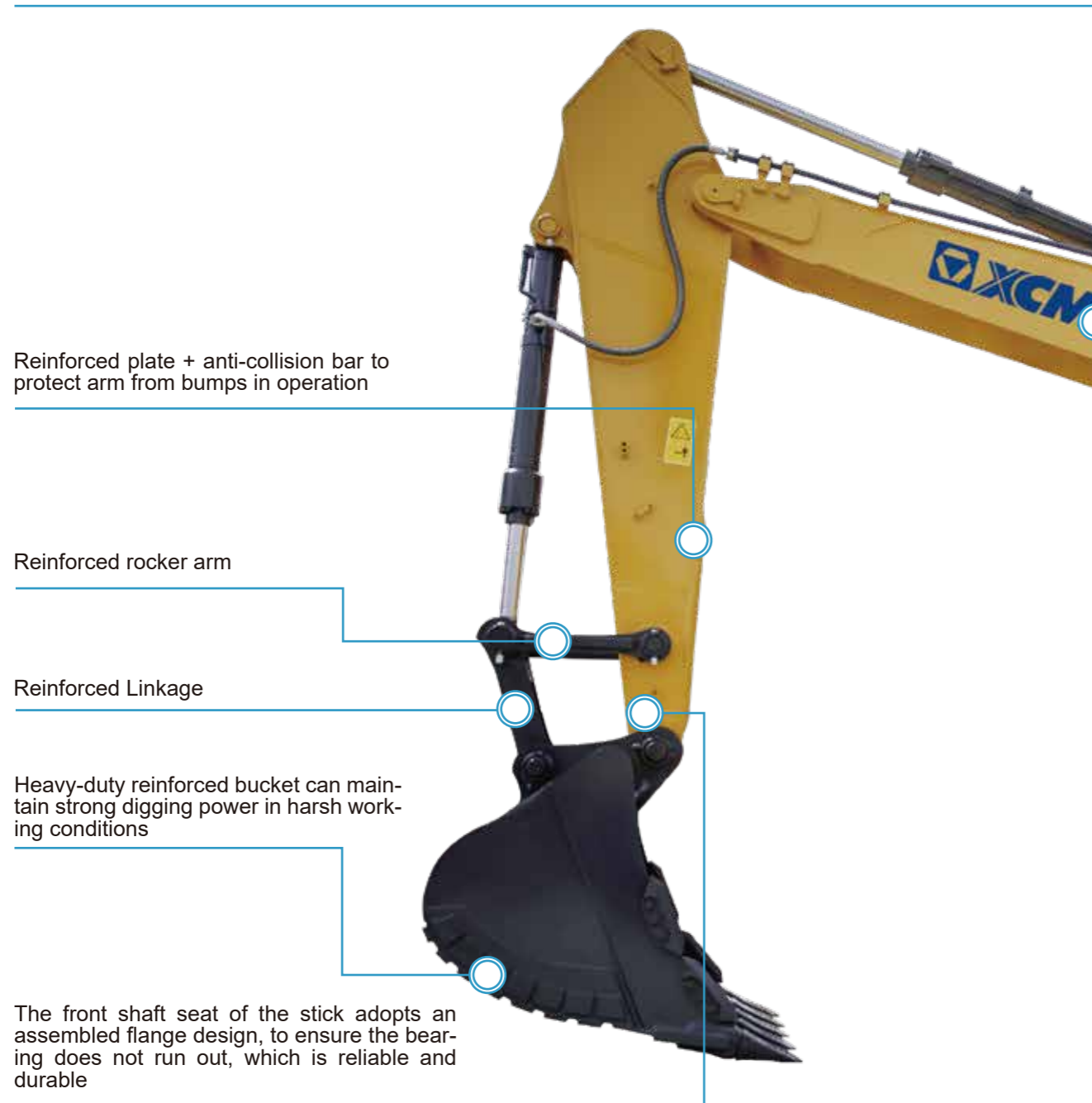
Rated power: 212kw/2,000rpm

Bucket capacity: 1.7m³-1.9m³





Reinforced working devices



Reinforced plate + anti-collision bar to protect arm from bumps in operation

Reinforced rocker arm

Reinforced Linkage

Heavy-duty reinforced bucket can maintain strong digging power in harsh working conditions

The front shaft seat of the stick adopts an assembled flange design, to ensure the bearing does not run out, which is reliable and durable



Reinforced rock bucket

Reinforced shed

Reinforced column structure, new side door limit structure, thickened hinge



standard equipped with extended and reinforced undercarriage, better stability and reliability in mining works

Working Conditions

Widely used in small and medium-sized mines, highway and bridge construction and other projects.

More energy-saving and environmentally friendly

Lower fuel consumption, low speed and high torque engine, provides excellent power output, has a good power curve and fuel consumption curve, more suitable for the actual working conditions of excavators, with strong power, fuel saving characteristics.



Latest generation controllers the new generation control system, to achieve the power system and hydraulic system accurate and fast match, make full use of the engine power.



More efficient

Expand the control range of the valve core, improve the control ability, reduce 30% channel pressure loss, and greatly improve the compound operation efficiency of the whole machine. Optimize the power match between the hydraulic pump and the engine, make full use of the engine power, reduce the waste of the engine output power, and further reduce the fuel consumption of the whole machine.



High efficiency main pump, higher volumetric efficiency, large washplate swing angle, high power density, higher efficiency under heavy load conditions.



More Comfortable and safe

The new cab with luxurious interior decoration, panoramic skylight design, wider vision, operation buttons centralized layout, so that the driving experience is fully upgraded. New cab interior, the commonly used electrical switch and standby switch are integrated on the right side of the interior, the location is centralized and easy to operate. Reserved low temperature start, quick change device and other expanded function installation mount.

Multi-functional colorful display

This machine provides the operator with a comprehensive and easy-reading function. It can fully monitor the working state of the engine and hydraulic system, and query the machine operation and fault diagnosis information.



Intelligent A/C

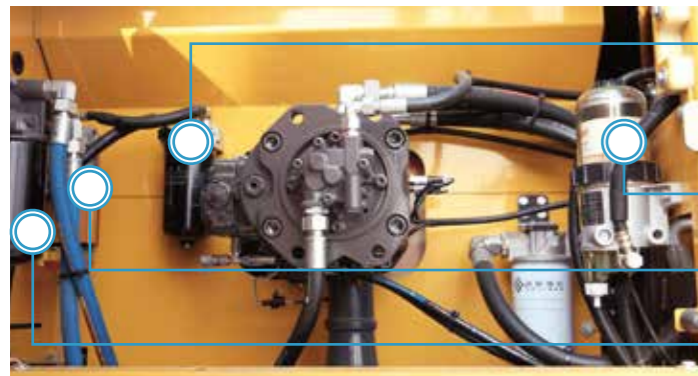
It can sense the indoor and outdoor temperatures and sunlight intensity, and intelligently adjust the air volume and compressor arrangement to ensure the driver to work in a comfortable environment.

Emergency stop

In case of an emergency, pressing the emergency stop switch to shut down the engine.



The engine cover can be fully/completely open with the assistance of a gas spring, making it convenient for check or repair. Engine filter, diesel filter, air filter and pilot hydraulic oil filter are arranged on reasonable positions where are easy to maintain.

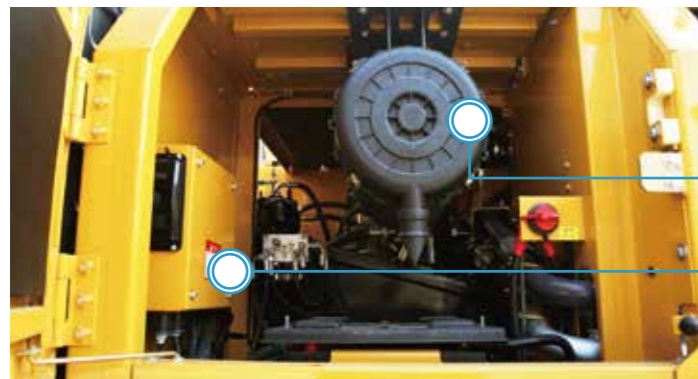


Three stage diesel filter

Transparent oil water separator

Two stage diesel filter

Independent engine oil filter element



Air filter

Integrated electrical box

We provide customers with high-quality and advanced multi-functional accessories to apply to diversified construction conditions.

It is a multifunctional accessory with reliable quality and advanced performance

This greatly expands functions of mining equipment, fully extends the operating scope of mining equipment, and continues to create more values and super high incomes for you.

Triangle breaking hammer



Ship hull and rust removal, concrete pavement breaking, building demolition and crushing of reinforced concrete, etc.

Eagle's beak shears



Special equipment for dismantling scrapped vehicles and recycling resources is suitable for dismantling heavy vehicles, steel plants, metals, ships, bridges and other steel structure facilities.

Compactor



Highway slope protection, dike and ditch tamping, etc.

Quick connector



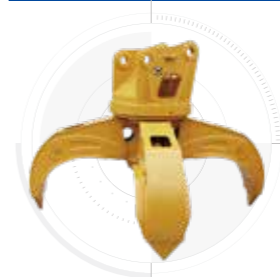
Quick link of XCMG excavator accessories

Pile driver



It applies to middle- and short-pile municipal engineering of bridge, cofferdam, wharf and deep foundation pit support.

Scrap grip



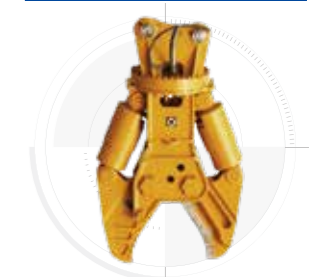
Effective tools for handling irregular and bulky materials such as steel scrap, pig iron, ore and garbage.

Crushing plier



Second crushing of concrete and the separation of reinforcement and concrete.

Heavy double-cylinder rotary hydraulic shears



Demolition of waste gas workshop, automobile, etc.

Wood grab



Special equipment for loading and unloading wood and stone.

Nipper



Capturing of construction waste, stone tools, woods, etc.

Vehicle breaking shear

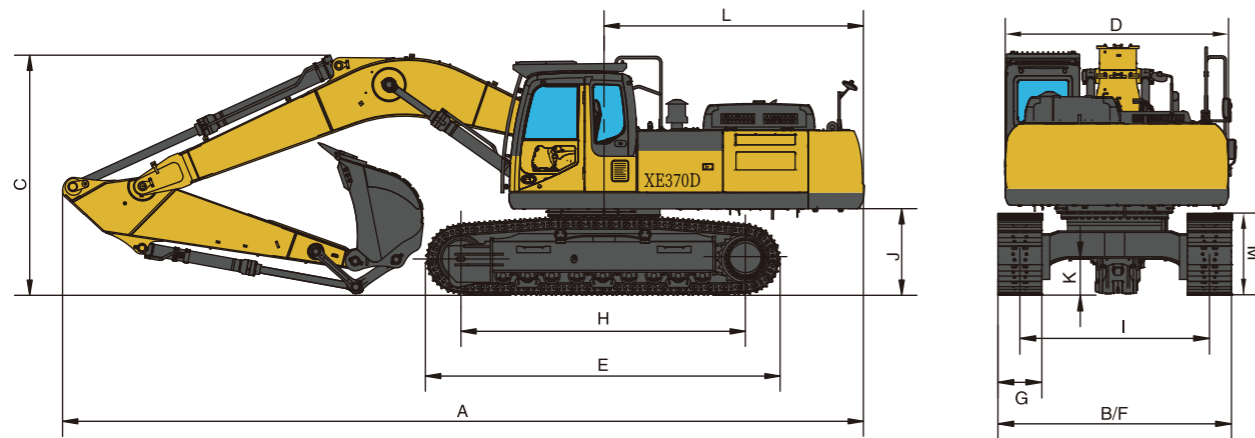


Special equipment for dismantling and recycling of scrapped vehicles

Straight breaking hammer

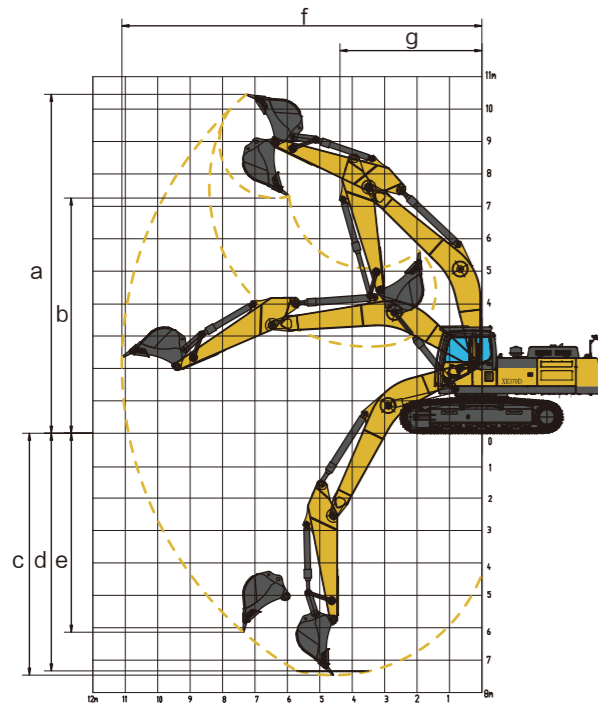


Mining, road fragmentation, municipal landscape reconstruction, building demolition, reinforced concrete crushing, etc.



Appearance size		
A Overall length	mm	11,388
B Overall width	mm	3,190
C Overall height	mm	3,530
D Width of platform	mm	3,050
E Track length	mm	5,035
F Total width of chassis	mm	3,190
G Width of crawler	mm	600

Appearance size		
H Crawler base	mm	4,040
I Track gauge	mm	2,590
J Counterweight clearance	mm	1,197
K Minimum ground clearance	mm	500
L Min slewing radius at turntable	mm	3,700
M Track height	mm	1,105



Working scope		
a Max. digging height	mm	10,445
b Max. dumping height	mm	7,287
c Max. digging depth	mm	7,423
d Max. digging depth (2.5m level)	mm	7,266
e Max. vertical wall digging depth	mm	6,776
f Max. digging radius	mm	11,114
g Min. swing radius	mm	4,369

Product Mode	Unite	XE370D
Operating weight	Kg	36,800
Bucket capacity	m³	1.7-1.9
Engine		
Engine Model	/	GH-6HK1XKSC-03
Direct injection	/	✓
Four strokes	/	✓
Water cooling	/	✓
Turbo supercharging	/	✓
Air intercooling	/	✓
Number of cylinders	/	6
Rated power of engine	kw/rpm	212/2,000
Maximum torque/speed	N.m/rpm	1,080/1,500
Displacement	L	7.79
Oil capacity		
Fuel tank capacity	L	660
Capacity of hydraulic oil tank	L	350
Engine oil capacity	L	30

Product Mode	Unite	XE370D
Hydraulic system		
Rated flow of main pump	L/min	2 × 296
Main relief valve pressure	MPa	34.3/37
Travel system pressure	MPa	34.3
Slewing system pressure	MPa	26.5
Pilot system pressure	MPa	3.9
Main performance		
Travel speed ^l	km/h	5.4/3.2
Swing speed	r/min	9.7
Gradeability	°	35
Ground pressure	kPa	66.7
Bucket digging force	kN	263
Arm digging force	kN	188
Maximum traction force	kN	285

* Standard (SD) Bucket enlarged (BE) Break (BK)								
Working Condition Table								
Model	Configuration	Boom Length	Arm Length	Bucket			Working Condition	
				Type	Capacity	Bucketwidth (the Max. width of side tooth's outer edge)	Material	Density
XE370D	SD	6400mm	3200mm	Rock	1.7m³	1400mm	Hard loess, heavy clay, stone, granite, soil mixed with stone, materials with stripped crushed stone and other high-wearing materials	2,100kg/m³
	BE		2670mm	Rock	1.9m³	1590mm	Heavy clay, hard loess, clay with stone, stone, quartzite and other medium-wearing materials	2,100kg/m³
	BK		2670mm	Rock (breaking pipeline standard equipped)	1.9m³	1590mm	Breaking	2,100kg/m³

Equipment name		XE370D	
Engine			
Engine Model	GH-6HK1XKSC-03		
Emission level	Stage III		
Automatic preheat	√		
Oil water separator with water level indication sensor	√		
Oil water separator with heater(24V)	⊙		
Radial seal air filter	√		
Air prefilter	√		
50°C high temperature environment cooling assembly	√		
Radiator dust screen	√		
Fuel vernier	√		
Coolant heater (fuel fired)	⊙		
Fuel filling pump 50L/min	⊙		
Fast fuel filling system	⊙		
Fuel breathing valve	√		
Air differential pressure indicator	√		
Automatic idling	√		
Hydraulic system			
Boom/arm flow regeneration	√		
Auxiliary hydraulic valve	√		
Reverse swing damper valve	√		
Automatic reversal parking brake	√		
Hydraulic buffer valve	√		
Straight hydraulic circuit	√		
Boom priority valve	√		
Reverse logic valve	√		
Hydraulic oil ISO VG 46	√		
Hydraulic line: quartering hammer and thumb plier	⊙		
Operating mode switch	⊙		
Hydraulic oil ISO VG 32, 68	⊙		
Rotary anti-sway valve	√		
Spare valve disc	⊙		
Instrument pressure monitor	√		
Chassis system and shield			
Tracked single rail protector	√		
Chassis traction ring	√		
600 mm (24") three-ribbed crawler shoe	√		
Bottom sealing plate of chassis, sealing plate of traveling motor	√		
600 mm (24") double-ribbed crawler shoe	⊙		
700 mm (28") double-ribbed crawler shoe	⊙		
800 mm (31") double-ribbed crawler shoe	⊙		
700 mm (28") three-ribbed crawler shoe	⊙		
800 mm (31") three-ribbed crawler shoe	⊙		
Extended chassis	⊙		
Crawler double guardrail device	⊙		
Safety and security configuration			
Driving door lock and lock of each compartment	√		
Alarm horn	√		
Isolation plate between engine and oil pump room	√		
Engine emergency stop switch	√		
Rear window emergency exit	√		
Battery circuit breaker	√		
Boom and arm retaining valve	√		
Explosion-proof valve for boom and arm pipeline	⊙		
Temperature alarm	√		
Safety handrails and pedals	√		
Rotating warning lamp	⊙		
Anti-skid board/anti-skid sticker	√		
Hydraulic safety locking rod	√		
Emergency escape hammer	√		
Left and right rearview mirror	√		
Counterweight rearview mirror	⊙		
Rearview monitoring camera	⊙		
Falling Object Protection Structure (FOPS)	⊙		
Cab and interior			
Supercharged driving seat	√		
Adjustable mechanical suspension seat	√		
Air suspension seat with the cushion heating function	⊙		
Adjustable seat armrest	√		
Safety belt (51mm[2"] width)	√		
Openable windscreens with auxiliary devices	√		
Front windshields split according to the proportion of 70/30	√		
Double laminated windscreens and other toughened windows	√		
Sliding door upper window	√		
Two ways AC with defroster (Automatic) (Pressurizing)	√		
Color LCD display indicating filter/fluid service cycles and working hours	√		
Operating handle	√		
Driving control pedal with detachable manual joystick	√		
Two stereo speakers	√		
Beverage cup holder	√		
Coat hook	√		
Cleanable floor mat	√		
Extension-type safety belt (51mm[2"] width)	⊙		
Vehicle-mounted oxygen supply device	⊙		
Fire extinguisher	⊙		
Air-conditioning system	√		
High and low speed shift	√		
One-click reenforcement mode	√		
Reserved switch for work auxiliaries	⊙		
Abat vent	⊙		
Top skylight	√		
Intermittent multi-gear wiper	√		
Cup holder/file pocket	√		
Storage boxes for heating and cooling	√		
Radio	√		
Electric system			
Storage battery (2 X850 CCA)	√		
50A alternator	√		
5 kW starting motor	√		
Traveling alarm	⊙		
24V cigarette lighter	√		
12 V cigarette lighter	⊙		
5V USB interface	⊙		
24V power interface	⊙		
Light			
Left/right boom working lamp	√		
Working lamp installed at the right side of the storage compartment	√		
Interior lighting in the driver's cab	√		
Front working lamp on the cab top	√		
Rear working lamp on the cab top	⊙		
Technology			
XEICS intelligent control system	√		
Data link socket)	√		
lubrication system			
Electric lubrication system	⊙		
Arm concentration	⊙		

Note: √-Standard configuration ⊙ - Optional configuration

