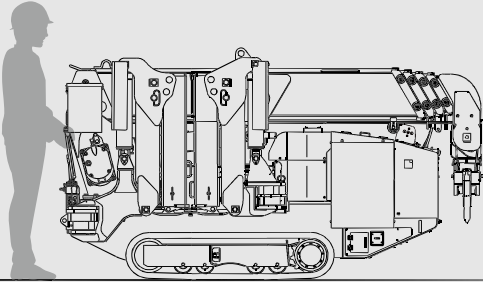


URW295CB2(ECO)

URW295CB2(ECO) is environment friendly model driven by a large-capacity battery without CO² emission during operation.



Max.
8.9m
Hook height (Approx.)
(Above ground level)

Continuous operating time

270 min (Standard)

240 min (High speed)

Charging time

5 hour (80%)

10 hour (100%)

Max.
8.41m
Working radius



Radio remote control

Max.
2.93t
× 1.4m
Lifting capacity

2350kg
Mass of crane

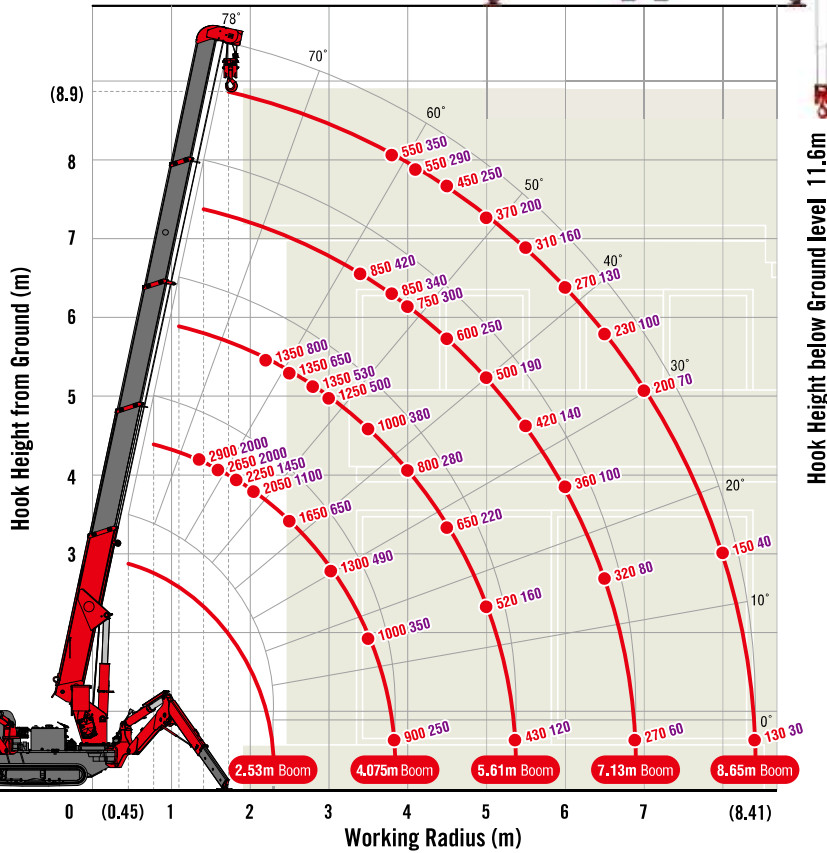
SPECIFICATIONS

Crane model	URW295CB2A	
Lifting capacity	Max. 2.93t at 1.4m	
Working radius	Min 0.45m, Max 8.41m	
Hook height (Approx.)	Above ground level	
	Max. 8.9m	
Below ground level	Max. 11.6m (with 4-part line)	
	Length	Min 2.53m, Max 8.65m
Boom	Extending speed	6.12m/31s (Standard) 6.12m/23s (High speed)
	Raising angle / speed	0° to 78°/17s (Standard) 0° to 78°/12s (High speed)
	Structure	5-section box beam type telescoping boom
Winch	Single line speed	28m/min (at 4th layer) (Standard) 36.4m/min (at 4th layer) (High speed)
	Hook speed	7m/min (at 4th layer with 4-part line) (Standard) 9.1m/min (at 4th layer with 4-part line) (High speed)
	Wire rope	Construction : IWRC 6 x WS(26) GRADE B / Diameter x Length : 8mm x 54m / Breaking strength : 42.4kN [4320kgf]
Hook block	2.9t capacity, 2 sheaves with safety latch	
	Range	360° continuous rotation on a ball bearing race
Stewing	Speed	1.0 rpm (Standard) 1.5 rpm (High speed)
	Outriggers	2-section (with damper) for bend and 5-section extension(front) / 4-section extension(rear). Double acting hydraulic cylinders with pilot-operated check valves, direct pushing type (Directly connected with hydraulic automatic lock device)
Hydraulic Pump	Type	Gear pump
	Rated pressure	For crawling: 21.6 MPa [220 kgf/cm ²] For crane: 20.6 MPa [210 kgf/cm ²]
Hydraulic oil tank capacity	27 liters	
Safety devices	Pressure relief valve for hydraulic circuit / Counterbalance valves for boom raising and boom telescoping cylinders / Double pilot-operated check valves for outrigger cylinders / Boom angle indicator with load indicator / Hook safety latch / Automatic mechanical brake for winch / Automatic stop for overwinding / Overwinding alarm / Emergency stop button / Inter-lock device of crane and crawling levers / Level / Stewing restriction limit switch / Turn over prevention device / Load meter	

MINI CRAWLER CRANE

WORKING RANGE & NET RATED LOADS (kg)

Outrigger ● Max-extended ● NOT max-extended



Sub-control box

Battery level can be displayed

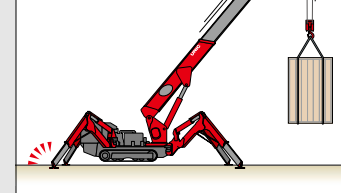


Charging cable

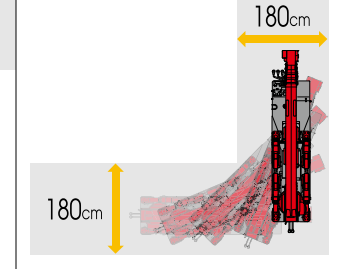


Turn over prevention device

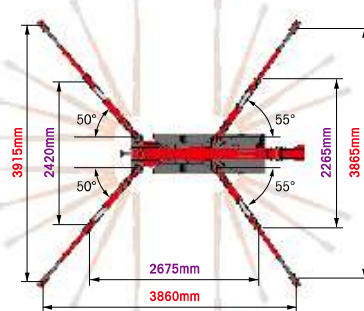
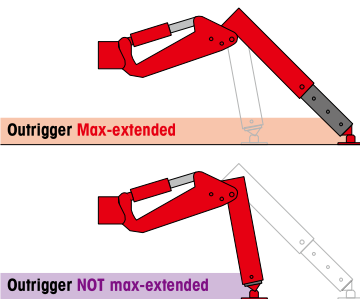
...STOP!



High mobility



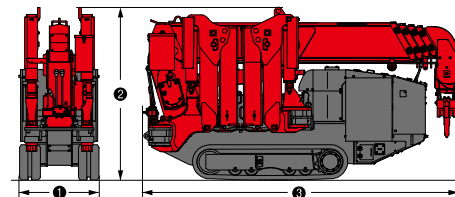
OUTRIGGER POSITIONS



CRAWLING GEAR

Crane model	URW295CB2A
Crawling speed	0-1km/h, forward / backward (Standard) 0-1.6km/h, forward / backward (High speed)
Hill climbing ability	20°
Tread length × width	1050mm × 180mm
Ground contact pressure	60.8kPa (0.62kgf/cm ²)
Battery type	Flooded lead acid battery
Battery model	VCI225 (DC48V-225Ah) (DC2V x 24 cells)
Continuous operating time	Approx. 270min (Standard) Approx. 240min (High speed)
Input voltage / current	AC200V (50/60Hz), Single-phase / 16A
Charging time	Approx. 5 hour (80%) Approx. 10 hour (100%)

DIMENSIONS



Crane model	URW295CB2A
① Total width	690mm
② Total height	1525mm
③ Total length	2720mm
Mass of crane	2350kg