



All Rights Reserved

Materials and specifications are subject to change without notice.
Featured machines in photos may include additional equipment.
See your XCMG dealer for available options.



XE55DA

Hydraulic Excavator



www.xcmg.com

XCMG Regional Departments:

Europe	(+86-516) 87739703 87739218 87739537	Africa	(+86-516) 87735009 87739222 87739283
West Asia & North Africa	(+86-516) 87739702 87739202 87739223	Central Asia	(+86-516) 87739236 87739239 87739538
Asia-Pacific	(+86-516) 87739128 87739500 87739529	America	(+86-516) 87739285 87739551 87739710

XUZHOU CONSTRUCTION MACHINERY GROUP IMP. & EXP. CO., LTD

Add: No.1, Tuolanshan Road, Xuzhou Economic Developing Zone, Jiangsu, China 221004

Fax: (+86-516) 87739230

E-mail: export@xcmg.com



Advanced Configuration

Ecological and economical

- ▶ Adopting new environmental friendly Yanmar engine, low speed torque, low fuel consumption, high operating efficiency, reliable and durable.
- ▶ It adopts a cross-stage large displacement constant power variable pump with high volumetric efficiency.

Multiple applications

- ▶ Short tail design and short slewing radius can achieve flexible operation in confined space
- ▶ Multiple additional configurations to adapt to a variety of operating requirements



Comfortable operating experience

- ▶ Fresh air conditioning system to ensure the appropriate temperature
- ▶ Toughened glass cockpit with good safety view
- ▶ Detailed design concept improves comfort

Safe and durable

- ▶ Integrated body design
- ▶ Strengthened structure and stress dispersing
- ▶ Upgrade undercarriage to improve load bearing performance

Excellent after-sales service

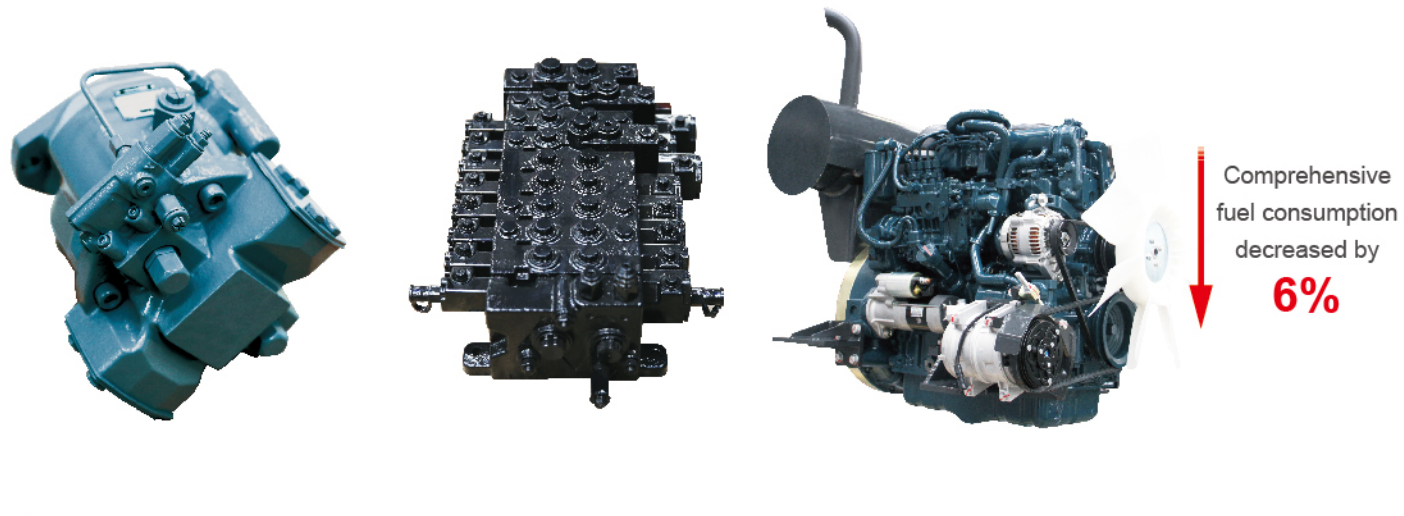
- ▶ Global after-sales service system and quick response mechanism
- ▶ Real-time technical consultation and maintenance

Convenient maintenance

- ▶ Easy maintenance design, open the engine hood for no dead angle maintenance
- ▶ The high pressure quick coupler pipeline and the back-up pipeline with adjustable flow make you use at ease.

Ecological And Economical

- ▶ New natural suction engine is featured with stable torque output, low fuel consumption and low noise. The hydraulic system and engine power are matched and optimized to realize the reduction of comprehensive fuel consumption for excavating operations by more than 6%.
- ▶ New load hydraulic sensitive system allows for improved maneuverability of compound actions, faster response speed, accurate control and small impact; it optimizes the main valve element and compensator, improves the arm speed of leveling compound actions, and makes the action speeds of boom and arm more coordinated and leveling performance greatly improved.
- ▶ Rotary torque is increased to improve the ability of slope operation. By increasing the displacement and pressure of the motor, the torque is increased by 15%, which makes the slope operation easier.



Comfortable And Reliable

- ▶ All operating elements inside the cab are scientifically and reasonably arranged in accordance with ergonomics. For this tonnage, it is the first one that uses cab sunshade curtain, the industry's first enclosed sunshade curtain for 6-ton cab, it can avoid direct sunlight and protect drivers from all directions. At the same time, it can significantly reduce the air conditioning load in summer, save 3.8% fuel.
- ▶ The seat package is improved, and the cushion is 20% thicker, which can improve the ride comfort and significantly reduce the sense of fatigue while working for a long time. The new seat suspension and omni-directional seat make the operator more comfortable, while the walking pedal is improved to make the operation easier and more comfortable.
- ▶ The cab's appearance is simple and smooth, the rear view is more open, and the silicone oil is used for shock absorption, which reduces the fatigue of the operator's long-time operation and improves work efficiency. The glass sliding window on the right side of the cab is added, the communication with the people on both sides is also convenient.



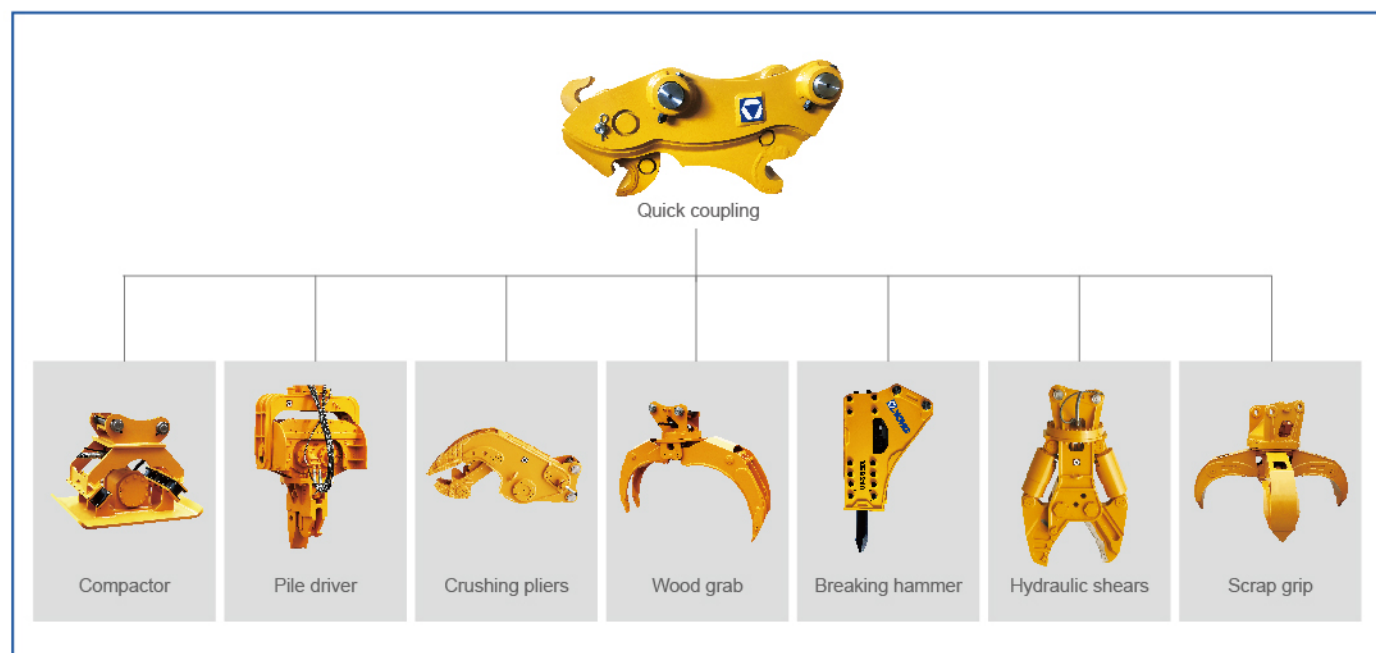
- ▶ Large area of high-strength tempered glass is used in the cab to improve the view of the driver while ensuring the intensity of cab. The top of the cab is equipped with lights to ensure accurate and safe work at night.
- ▶ Strengthen the local area of boom and arm bearing high stress, and meanwhile adjust the structure, disperse stress and improve the service life; standard new-type bucket and reduced bucket depth make unloading quicker and faster.
- ▶ X-frame structure is adopted for undercarriage. Large cross-section box is formed inside the lower frame through strengthened rib plate, which has good bearing capacity and the weight of the vehicle can be uniformly applied on the track roller frame to reduce its local stress concentration.

Multiple Applications Conditions

- ▶ The short tail design with short slewing radius, it can realize complex operation together with upper structure slewing to ensure that the digging is parallel with wall surface in narrow space through the cooperation of upper structure slewing so as to easily deal with various operating conditions. Operation in narrow lane can also be done through the swing of the dozer blade



- ▶ With one set of high pressure quick coupler pipeline and two sets of back-up pipelines with adjustable flow, it can provide more attachment options and the adjustable flow control allows user to operate more smoothly. Crushing pipeline, hammer, refueling pump and rubber crawler block are optional to broaden the application fields of the machine.



Maintenance And Service

- ▶ After the hood is opened, the maintenances of diesel engine filter and oil filter are within reach.
- ▶ A wide range of after-sales service system, quick-response rescue mechanism to ensure that you use at ease.
- ▶ The glass liquid water bottle is installed on the back side of the cab to facilitate the observation of the glass water level.
- ▶ The slewing motor gear oil filling port is led out to the fuel tank for easy filling of the gear oil, which reduces maintenance difficulty and greatly reduces maintenance man-hours.



The XE55DA with short-tail design can apply to the narrow work conditions. The engine powertrain is featured with stable torque output, low fuel consumption and low noise. The load hydraulic sensitive system allows for improved maneuverability of compound actions, faster response speed, accurate control and small impact. Strengthen the local area of boom and arm bearing high stress, and meanwhile adjust the structure, disperse stress and improve the service life; standard new-type bucket and reduced bucket depth make unloading quicker and faster. It is easy to achieve fine work such as flat land. It is widely used in small earth and stone works, municipal construction, road repair, concrete crushing, buried cables, farmland water conservancy construction, garden cultivation and river channel dredging.



Standard Configuration

	Name of equipment	XE55DA
Engine	Engine model	Kubota V2607
	Emission level	National III
	Manual preheating	
	Air cleaner (equipped with air cleaner blockage indicator)	
	Double filter element of air filter	
	Air prefilter	
	Collector type engine oil filter	
	Collector type fuel main filter	
	Fan shroud	
	Radiator auxiliary water tank	
	Oil-water separator	
	Alternator	
	Soft shaft speed control	
	Control valve with main overflow valve	
Hydraulic system	Pilot filter	
	Oil suction filter	
	Accumulator	
	Arm flow regeneration	
	Spare valve plate	
Cab and interior trim	AM - FM radio with digital display	
	All - weather soundproof steel structure cab	
	Beverage cup holder	
	Two stereo speakers	
	Emergency hammer	
	Fire extinguisher support	
	Front window washer	

Cab and interior trim	Cleanable floor mat
	Footrest board
	Luxury seat
	Openable front upper windshield
	Removable front and lower windshield
	Tempered glass sliding door and window
	Intermittent windscreen wiper
	Control handle
	High and low gears shift
	Air conditioning system
	Cigarette Lighter/Standby Power Supply
	Internal lighting in the cab
	Rearview mirror
	LCD liquid crystal monitor
Safety and security configuration	Driving door locks and cabin locks
	Alarm horn
	Parking brake for walking
	Rotary parking brake
	Battery circuit breaker
	Hydraulic safety locking lever
	Emergency escape hammer
Chassis system and shield	Front work light
	Counterweight reflector
	Track tensioning mechanism
	Bottom frame traction ring
	400 mm three-rib track shoe
	Bottom sealing plate of chassis
Walking motor sealing plate	

Chassis system and shield	Track clamp
	Bulldozer shovel
Working device	Boom 3.00m
	Arm 1.6m
	Bucket 0.21m ³ (ISO full bucket)
Electrical system	Battery (1× 90Ah)
	12V power interface
	Engine cooling water temperature display
	Fuel level display
	Engine speed display
	Working hour meter
	Engine oil pressure, engine overheat alarm
	Charging indication
	Air filter clogging alarm
	Engine warm-up indication
	Hydraulic oil temperature alarm
Lighting lamp	Left boom working light
	Working light mounted in the cab
Counterweight	Counterweight

Optional Configuration

	Name of equipment	XE55DA
Hydraulic system	Hydraulic pipeline: breaking hammer	
	Hydraulic oil ISO VG 32, 68	
Cab and interior trim	Fire extinguisher	
Safety and security configuration	Roll over protection structure (ROPS)	
	Falling object protection structure (FOPS)	
Chassis system and shield	Track rubber block	
	Quick connector	
Working device	Breaking hammer	
	Hydraulic thumb pliers	
	Scarifier	
	Vibrating tamper	
	Hydraulic shear	
	Grab tool	
	High frequency crusher	
	Shell bucket	
	Plum grab bucket	
	Screen bucket	
	Pipe grabbing machine	
Electrical system	12V cigarette lighter	

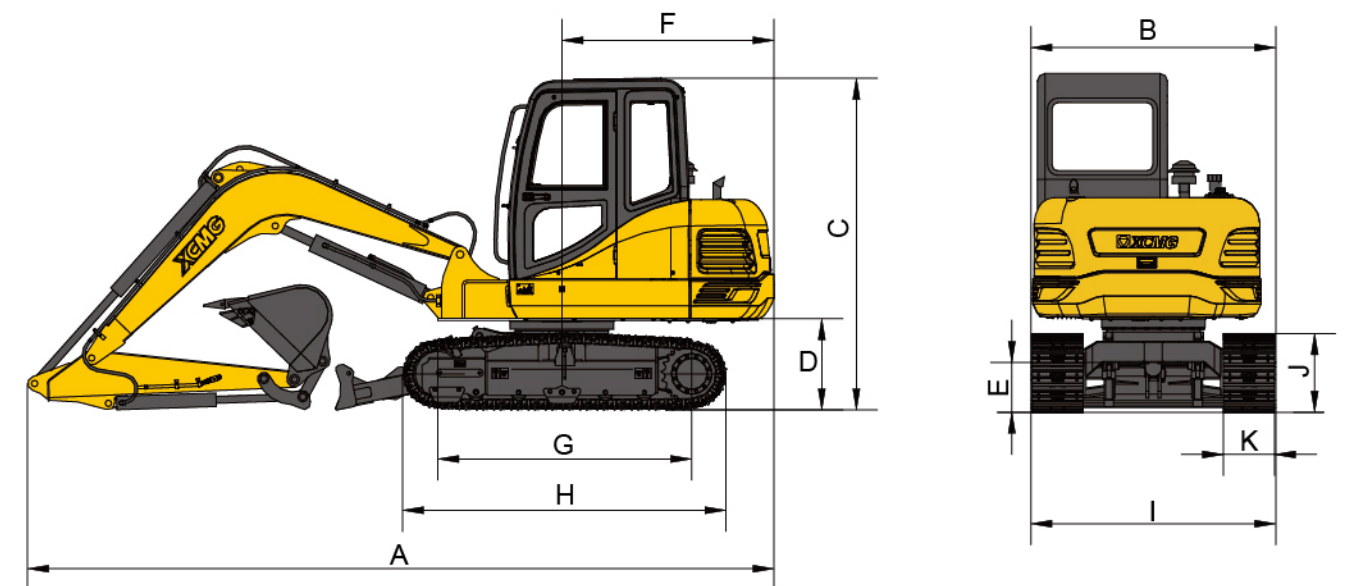
Main Specifications

Item	unit	Main specifications	
Model	/	XE55DA	
Operating Weight	Kg	5750	
Bucket Capacity	m ³	0.21	
Engine	Model	Kubota V2607	
	Direct injection	√	
	Four strokes	√	
	Water cooling	√	
	Turbocharging	√	
	Air-to-air intercooler	√	
	No.of cylinders	4	
	Rated power	kw/rpm	35/2200
	Maximum torque/speed	N.m/rpm	171.50/1300
	Displacement	L	2.615
Main Performance	Travel speed(H/L)	km/h	4.2/2.2
	Swing speed	r/min	10
	Gradeability	°	≤35
	Ground pressure	kPa	31
Hydraulic System	Bucket digging force	kN	48.3
	Arm digging force	kN	32.5
	Maximum tractive force	kN	50.5
	Main pump	/	/
	Rated flow of main pump	L/min	150
	Main safety valve pressure	MPa	24.5
	Travel system pressure	MPa	24
	Swing system pressure	MPa	23
Pilot system pressure	MPa	3.5	

	Item	Unit	Parameters
Oil Capacity	Fuel tank capacity	L	110
	Hydraulic tank capacity	L	85
	Engine oil capacity	L	9
Standard	Length of boom	mm	3000
	Length of arm	mm	1600
	Bucket capacity	m ³	0.21

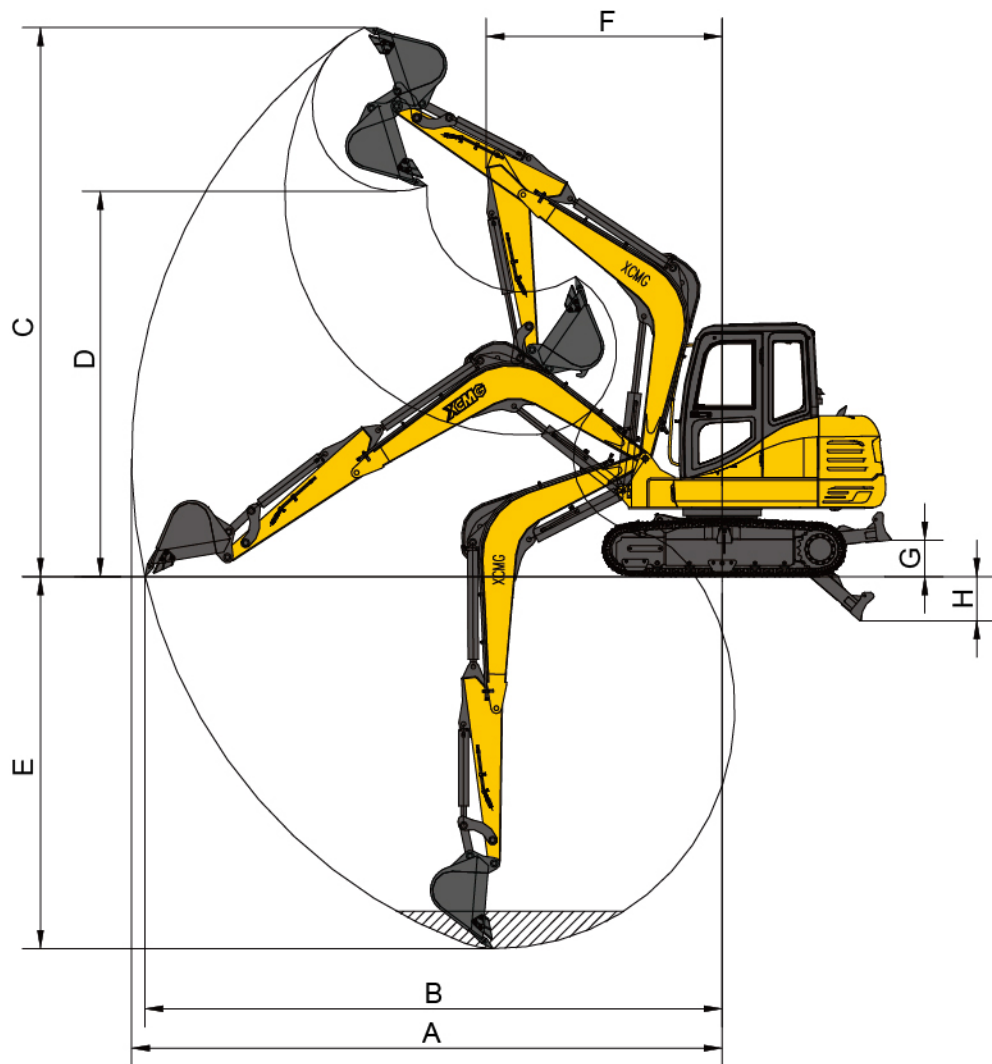
Dimensions

	Item	Unit	Parameters
Apperance size	A Overall length	mm	5860
	B Overall width	mm	1920
	C Overall height	mm	2585
	D Width of platform	mm	1780
	E Overall width of chassis	mm	1920
	F Track shoe width	mm	400
	G Wheel gauge	mm	1990
	H Track gauge	mm	1500
	I Counterweight clearance	mm	700
	J Minimum ground clearance	mm	385
	Dozer blade (width / height)	mm	1920×340



Working Range

	Item	Unit	Parameters
Working scope	A Max. digging height	mm	9855
	B Max. dumping height	mm	6890
	C Max. digging depth	mm	7000
	D Maximum depth cut for 2240mm(8 ft) level bottom	mm	6900
	E Max. vertical wall digging depth	mm	4500
	F Max. digging radius	mm	10855
	G Min. swing radius	mm	4580


Lifting Capacity

Lifting point height (m)	Rated lift capacity – Straight ahead (back) (kg)				Rated lift capacity – over-side (kg)			
	Lifting point radius (m)			Lifting capacity at maximum radius	Lifting point radius (m)			Lifting capacity at maximum radius
	1.5	3	4.5		1.5	3	4.5	
4.5				*990				870
3			870	750			630	530
1.5		1640	830	630		1160	580	430
Ground		1500	780	640		1030	540	440
-1.5	*2370	1480		810	*2370	1010		560

Capacities marked with an asterisk (*) are limited by hydraulic capacities