

KOBELCO

**ACERA GEOSPEC SUPER X
SK380HDL-8**

ACERA Hydraulic Excavators
GEOSPEC

Super X

SK380HD LC



Bucket Capacity:

1.4 - 2.3 m³ ISO heaped

Engine Power:

280 HP (209 kW)/2,100 min⁻¹ (ISO 14396)

Operating Weight:

35,800 kg

We Save You Fuel
Achieving a Low-Carbon Society

Sturdy Construction & Built-in Durability

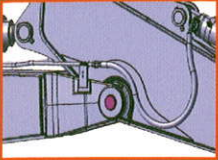
Stable Attachment Strength

Forged and cast components are used throughout. The arm tip's cross-sectional coefficient is 15 % higher than previous models, giving the arm the same strength as the 3-faced reinforced arm that was offered only as an option before. The strength of the boom foot has also been increased by 18 %.

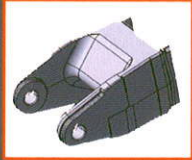
Durability That Retains Machine Value Five and Ten Years in the Future

- New operator's seat covered in durable material
- High-quality urethane paint
- Easily repaired bolted hand rails

Reinforced arm foot pin



Integrated cast steel boom top



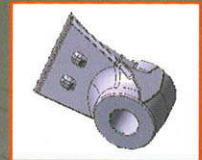
Reinforced arm



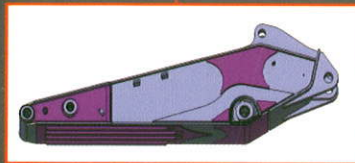
Reinforced boom



Cast steel boom foot boss



Larger size bucket up to 2.3 m³



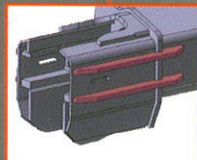
Thicker Shoe Plate



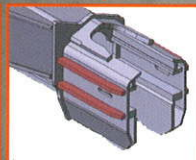
Thicker Shoe Plate (16 mm)



Reinforced idler





Extra heavy-duty idler cover



Reinforced Track Guides Installed on Three Places

Efficient Performance

Amazing Productivity with 18 % Saving in Fuel Consumption and Top-Class Cost Performance

	Fuel Consumption* 18% improvement in fuel efficiency when performing more work volume (S-Mode)
	Work Volume* 27% increase in work volume using the same amount of fuel. (H-Mode)

*The value shows results from actual measurements taken by KOBELCO when compared with previous KOBELCO models.

"Top-Class" Powerful Digging

Max. arm crowding force with power boost:	253kN (2.25m arm)	
Max. bucket digging force with power boost:	236kN (2.3m ³ bucket)	

Powerful Travel

Drawbar pulling force:	322kN	
------------------------	--------------	---

Greater Swing Power, Shorter Cycle Times

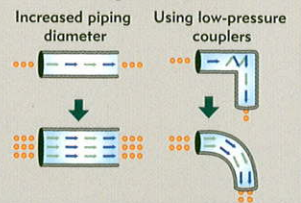
Swing speed:	10.0mim⁻¹	
--------------	-----------------------------	---

NEXT-3E Technology

New Hydraulic System

Rigorous inspections for pressure loss are performed on all components of the hydraulic piping, from the spool of the control valve to the connectors. This regimen, combined with the use of a new, high-efficiency pump, cuts energy loss to a minimum.

Reducing Pressure Loss



NEXT-3E Technology

Next-Generation Electronic Engine Control

The high-pressure, common-rail fuel-injection engine features a cooled EGR (Exhaust Gas Recirculation) device that lowers the air intake temperature to keep the oxygen concentration down.



Pursuing the "3E's"

- Enhancement:** Greater performance capacity
- Economy:** Improved cost efficiency
- Environment:** Features that go easy on the earth

Comfort and Safety



Spacious, Comfortable Cab

Designed for safety, the cab meets ISO standards, and also offers a spacious interior and plenty of foot room, with levers and other controls ideally positioned for easy operation.

Reclining Seat

Seat can be reclined to horizontal position

Wide-Access Cab Ensures Smooth Entry and Exit

The left control box lifts up with the safety lock lever to add 10° to the cab entry angle for easy entrance and exit.

Wide Field of View Liberates the Operator

The front field of view easily clears ISO standards, while the peripheral view reduces blind spots to a minimum.

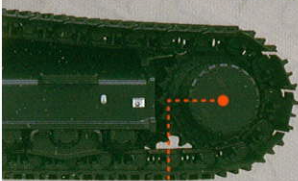
Suspension Seat

Comfortable suspension seat that reduces operator fatigue fitted as standard.



Pre-air Cleaner

The pre-air cleaner prolongs a replacement cycle of main air cleaner.



Stronger casing for travel motor



Reinforced travel motor cover

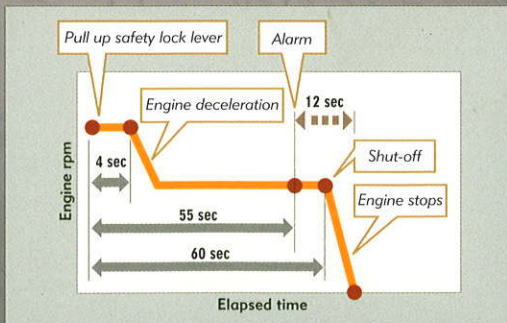
Easy Maintenance



Comfortable "On the Ground" Maintenance

The machine layout was designed with easy inspection and maintenance in mind.

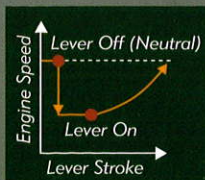
Auto Idle Stop Provided as Standard Equipment



This function saves fuel and cuts emissions by shutting down the engine automatically when the safety lock lever is pulled up. It also stops the hourmeter, which helps to retain the machine's asset value.

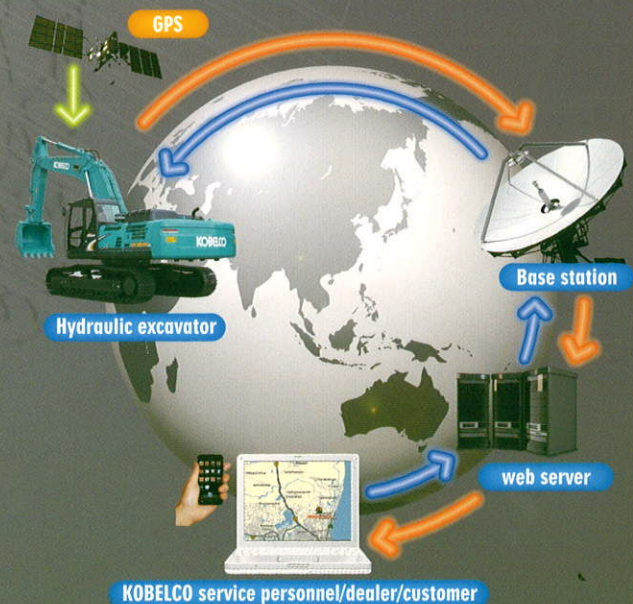
Automatic Acceleration/Deceleration Function Reduces Engine Speed

Engine speed is automatically reduced when the control lever is placed in neutral, effectively saving fuel and reducing noise and exhaust emissions. The engine proportionally comes to desired speed when the lever is moved out of neutral.



GEOSCAN

GEOSCAN is the remote monitoring system for Acera Geospec series excavators. When a hydraulic excavator is fitted with this system, data on the machine's operation, such as operating hours, location, fuel consumption, and maintenance status can be obtained remotely.

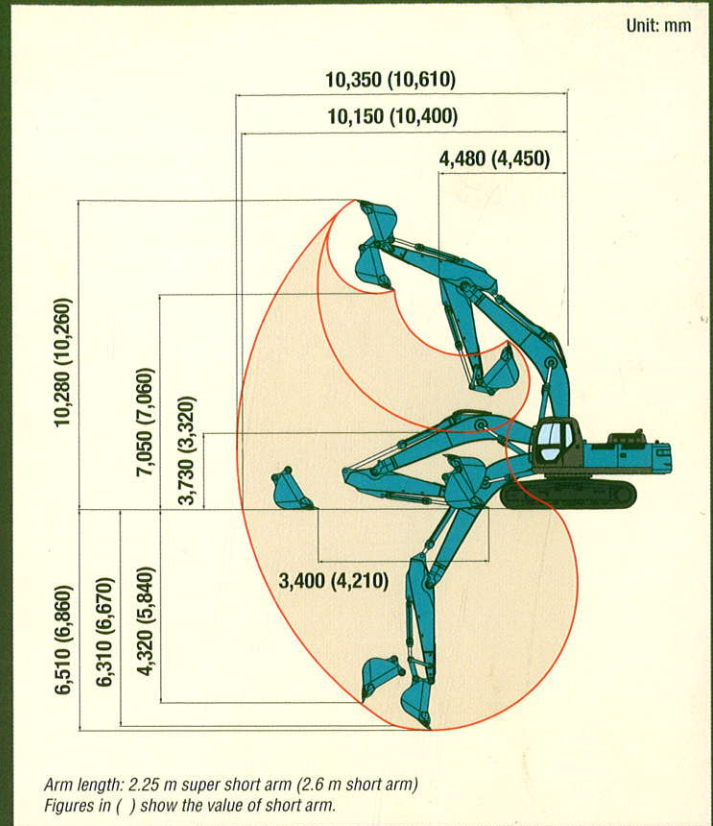


Specifications

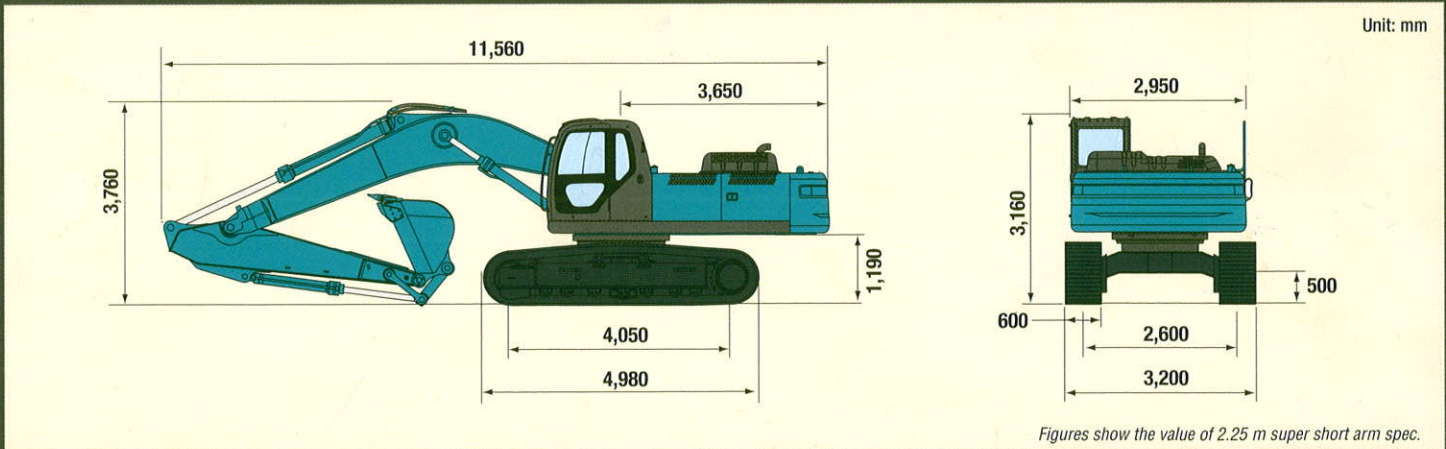
MODEL		SK380HDLC
PERFORMANCE		
Bucket Capacity	ISO heaped m ³	1.4 - 2.3
Swing Speed	min ⁻¹ {rpm}	10.0 {10.0}
Travel Speed	km/h	5.6/3.3
Gradeability	% {°}	70 {35}
Bucket Digging Force	kN	216 (236)* (2.3 m ³ bucket)
Arm Crowding Force	kN	230 (253)* (2.25 m arm)
Drawbar Pulling Force	kN	322 (ISO 7464)
WEIGHT		
Operating Weight	kg	35,800
Ground Pressure	kPa	67
Shoe Width	mm	600
ENGINE		
Model		HINO J08E-TM
Type		Direct injection, water cooled, 4-cylce, 6-cylinder diesel engine with turbocharger, intercooler
Power Output	HP (kW)/min ⁻¹	280 (209)/2,100 (ISO 14396)
Max. Torque	N·m/min ⁻¹	998/1,600 (ISO 9249)
Displacement	L	7.684
Fuel Tank	L	580
HYDRAULIC SYSTEM		
Pump		Two variable displacement pumps + one gear pump
Max. Discharge Flow	L/min	2 x 294, 1 x 20
Relief Valve Setting	MPa {kgf/cm ² }	34.3 {350} (37.8 {385})*
Swing Motor		Axial piston motor
Travel Motors		2 x axial-piston, two-step motors
Hydraulic Oil Tank	L	353: system (280: tank level)

* Power Boost engaged

Working Ranges



Dimensions



Note: This catalog may contain attachments and optional equipment that are not available in your area. And it may contain photographs of machines with specifications that differ from those of machines sold in your areas. Please consult your nearest KOBELCO distributor for those items you require. Due to our policy of continuous product improvements all designs and specifications are subject to change without advance notice. Copyright by **KOBELCO CONSTRUCTION MACHINERY CO., LTD.** No part of this catalog may be reproduced in any manner without notice.

KOBELCO CONSTRUCTION MACHINERY CO., LTD.

17-1, Higashigotanda 2-chome, Shinagawa-ku, Tokyo 141-8626 JAPAN
 Tel: +81 (0) 3-5789-2146 Fax: +81 (0) 3-5789-2135
www.kobelco-kenki.co.jp/english_index.html

Inquiries To: